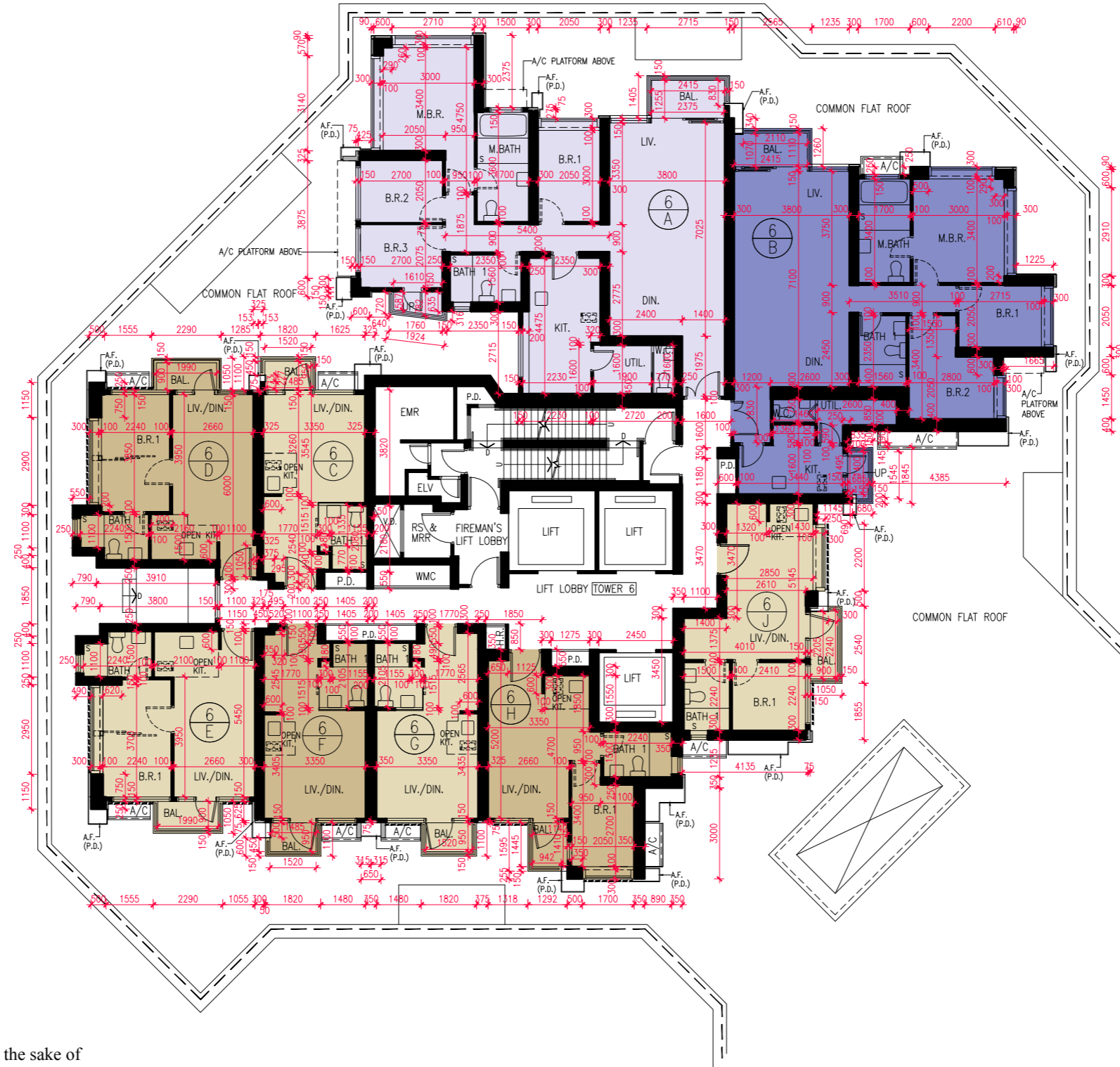


FLOOR PLANS OF RESIDENTIAL PROPERTIES IN THE PHASE

期數的住宅物業的樓面平面圖

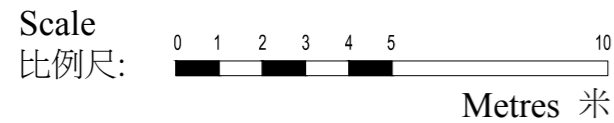
Tower 6 6/F Floor Plan
第6座 6樓樓面平面圖



----- MAINTENANCE WINDOW 維修窗口

Remark: The openable parts shall be closed for the sake of noise mitigation.

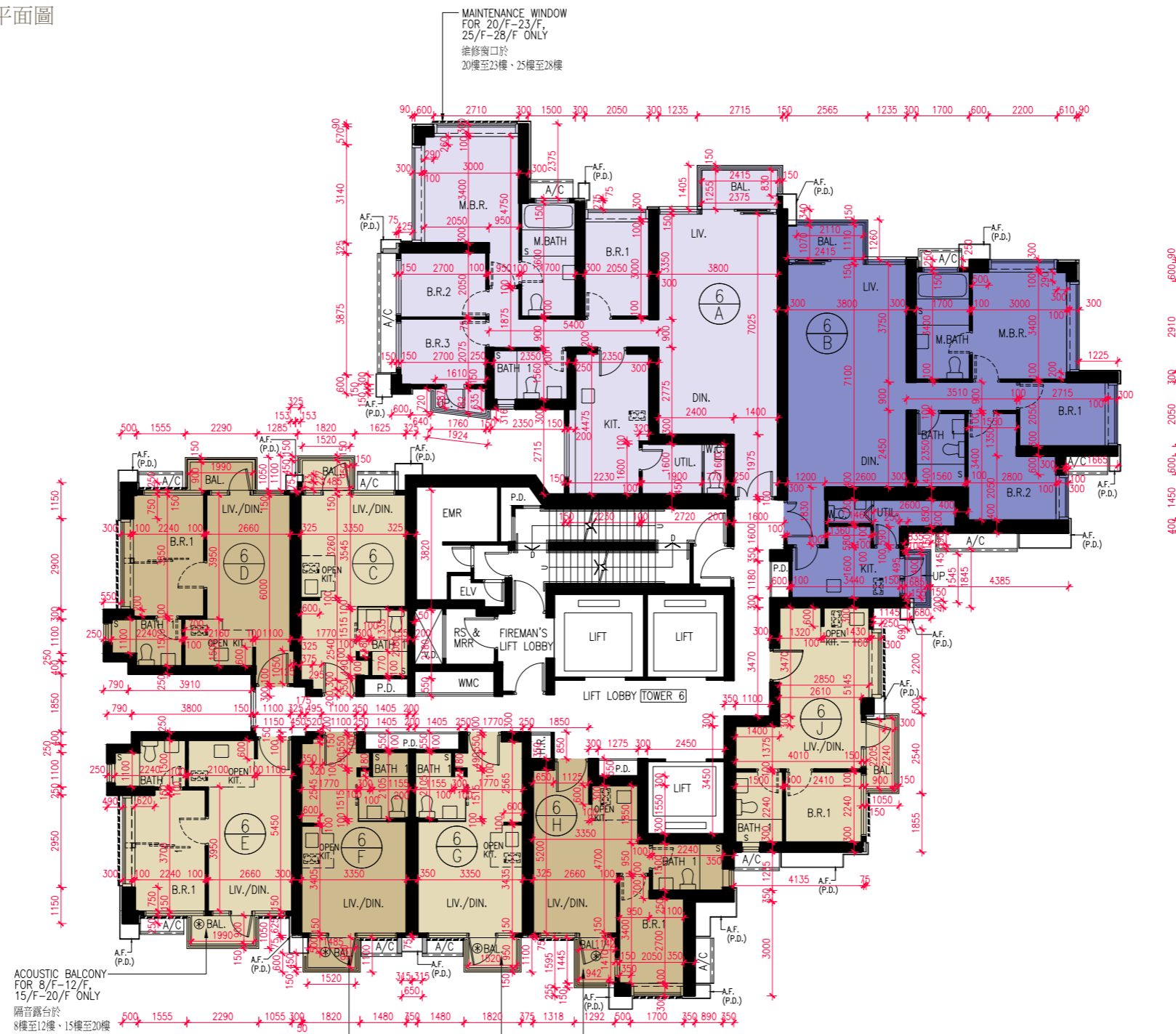
附註：為了緩解噪音的目的，可開啟的部份應當關閉。



FLOOR PLANS OF RESIDENTIAL PROPERTIES IN THE PHASE

期數的住宅物業的樓面平面圖

Tower 6 7/F-12/F, 15-23/F and 25/F-28/F Floor Plan
 第6座 7樓至12樓、15樓至23樓及25樓至28樓樓面平面圖



⊗ ACOUSTIC BALCONY 隔音露台

----- MAINTENANCE WINDOW 維修窗口

Remark: The openable parts shall be closed for the sake of noise mitigation.

附註：為了緩解噪音的目的，可開啟的部份應當關閉。

Scale
 比例尺:

