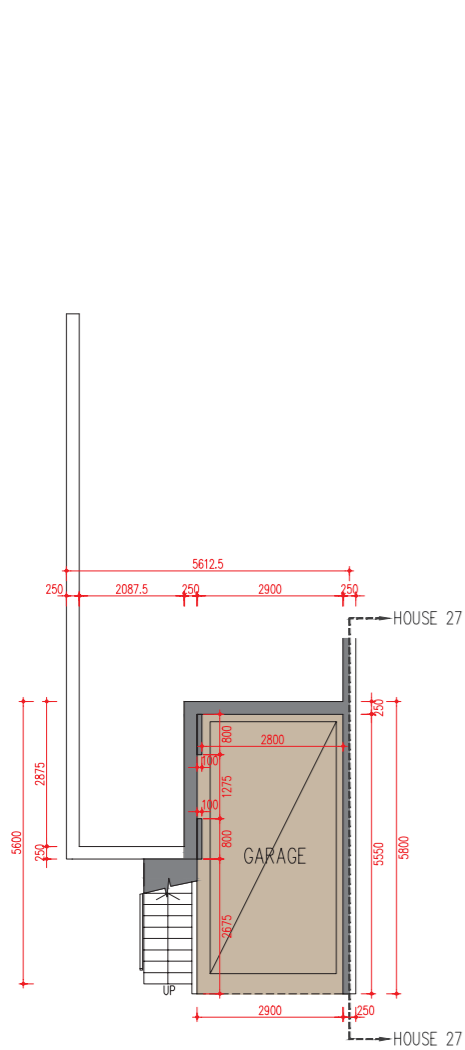
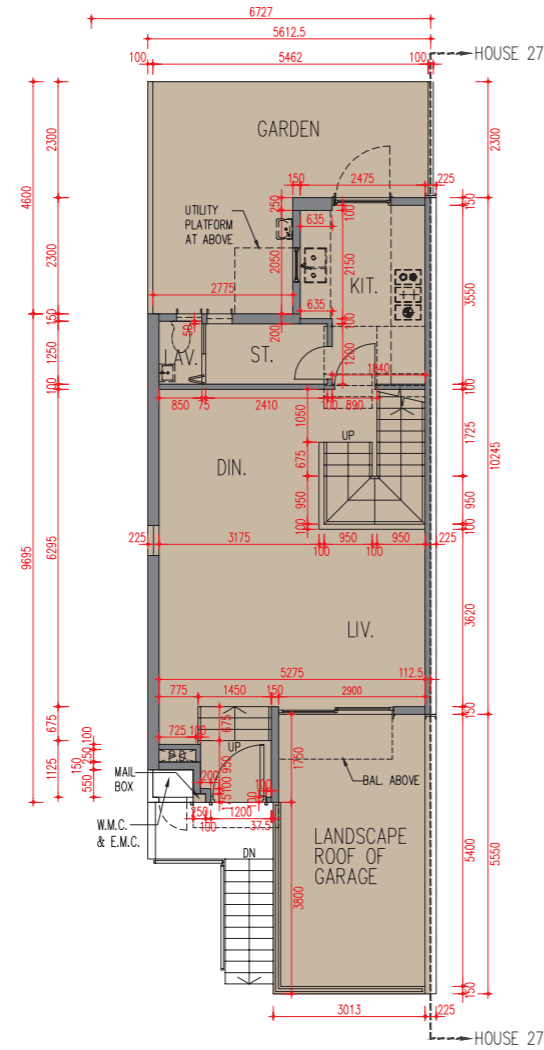


28號洋房 House 28

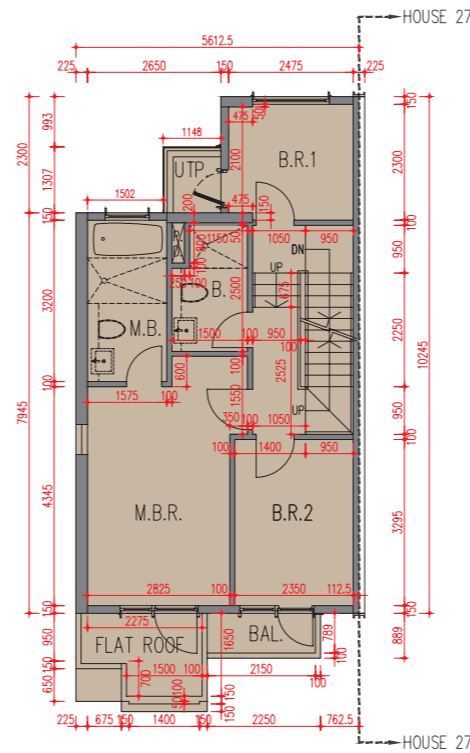
上層地庫平面圖
UB/F Plan



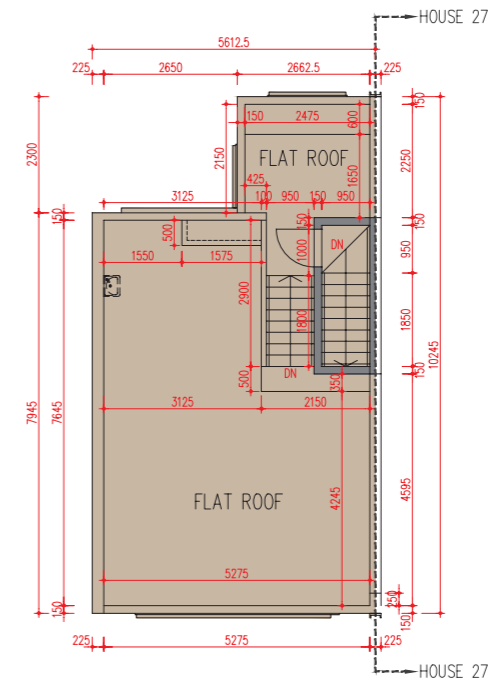
地下平面圖
G/F Plan



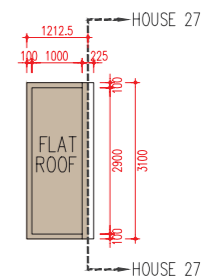
1樓平面圖
1/F Plan



天台平面圖
Roof Plan



上層天台平面圖
Upper Roof Plan



樓層 Floor	上層地庫 UB/F	地下 G/F	1樓 1/F	天台 Roof	上層天台 Upper Roof
層與層之間的高度 (毫米) Floor-to-floor height (mm)	3040	3800, 4500	3500	不適用 N/A	不適用 N/A
樓板厚度 (毫米) Thickness of the floor slabs (mm)	150	150, 175, 250	150, 175		

因住宅物業的較高樓層的結構牆的厚度遞減，較高樓層的內部面積，一般比較低樓層的內部面積稍大。(不適用)

備註：

- 樓面平面圖之尺規所列數字為以毫米標示之建築結構尺寸。
- 每個住宅物業的層與層之間的高度指該樓層之結構地台面與上一層結構地台面之高度距離。
- 每個住宅物業的樓板的厚度不包括灰泥。

The internal areas of the residential properties on the upper floors will generally be slightly larger than those on the lower floors because of the reducing thickness of the structural walls on the upper floors. (Not applicable)

Notes:

- The dimensions in the floor plans are all structural dimensions in millimetre.
- The floor-to-floor height refers to the height between the top surface of the structural slab of a floor and the top surface of the structural slab of its immediate upper floor of each residential property.
- The thickness of the floor slabs excludes plaster of each residential property.