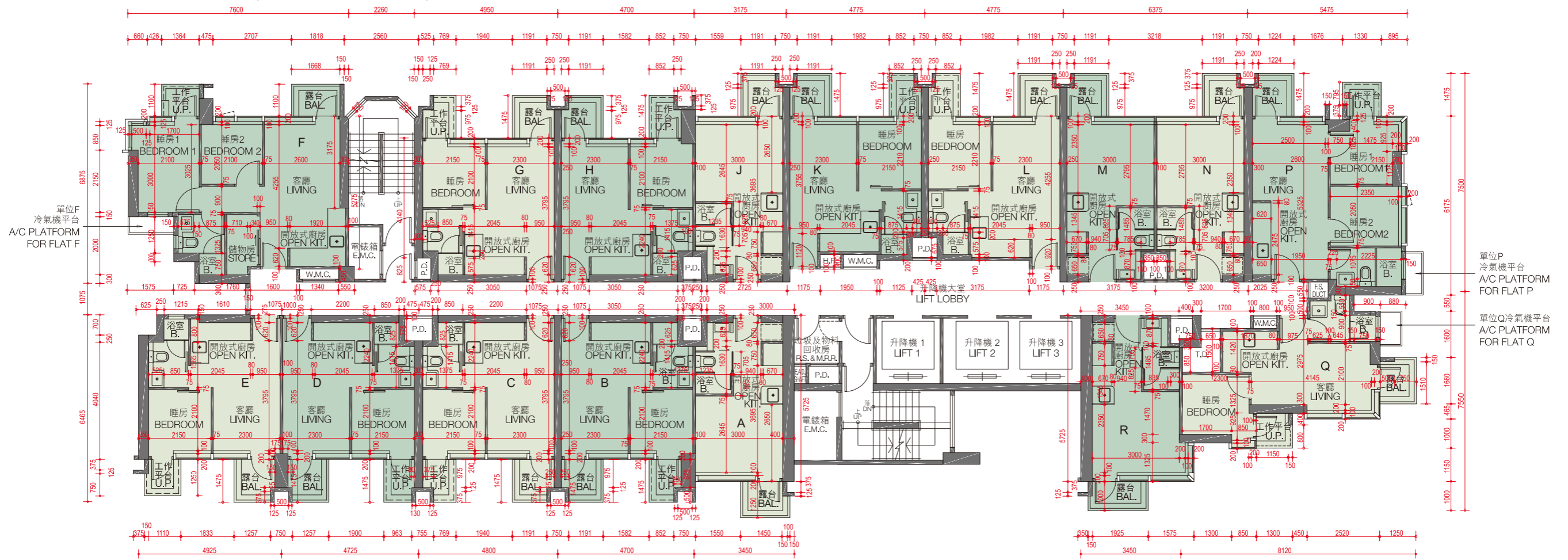


10. 發展項目的住宅物業的樓面平面圖 FLOOR PLANS OF RESIDENTIAL PROPERTIES IN THE DEVELOPMENT

5樓至12樓、15樓至23樓、25樓至33樓及35樓至36樓平面圖 5th to 12th, 15th to 23rd, 25th to 33rd and 35th to 36th Floor Plan



備註：平面圖所列數字為以毫米標示之建築結構尺寸。

Note: The dimensions in floor plans are all structural dimensions in millimeter.

包括跌級樓板上之混凝土填充層厚度。

Inclusive of the thickness of mass concrete fill on sunken slab.

每個住宅物業 Each Residential Property	樓層 Floor	單位 Flat															
		A	B	C	D	E	F	G	H	J	K	L	M	N	P	Q	R
樓板 (不包括灰泥) 的厚度 (毫米) Thickness of Floor Slab (excluding plaster) (mm)	5/F - 12/F, 15/F - 23/F, 25/F - 33/F & 35/F	150	150	150	150	150	150, 175	150	150	150	150	150	175	175	150	150	150
層與層之間的高度# (毫米) Floor-to-Floor Height# (mm)		3350	3350	3350	3350	3350	3350	3350	3350	3350	3350	3350	3350	3350	3350	3350	3350
樓板 (不包括灰泥) 的厚度 (毫米) Thickness of Floor Slab (excluding plaster) (mm)	36/F	150	175	175	175	175	150, 175	150	150	150	175	175	200	200	150	150	150
層與層之間的高度# (毫米) Floor-to-Floor Height# (mm)		3500	3500	3500	3500	3500	3500	3500	3500	3500	3500	3500	3500	3500	3500	3500	3500

因住宅物業的較高樓層的結構牆的厚度遞減，較高樓層的內部面積，一般比較低樓層的內部面積稍大。

The internal areas of the residential properties on the upper floors will generally be slightly larger than those on the lower floors because of the reducing thickness of the structural walls on the upper floors.

請參閱本售樓說明書第18頁為住宅物業樓面的平面圖而設之備註及圖例。

Please refer to page 18 of this sales brochure for the notes and legends of the floor plans of residential properties.

各住宅物業的樓面平面圖內所展示之裝置及設備的圖標如浴缸、洗面盆、座廁、淋浴間、洗滌盆、櫃(如有)等乃根據最新經批准的建築圖則擬備，其形狀、尺寸、比例或與實際提供的裝置及設備存在差異，僅供示意及參考之用。Those icons of fittings and fitments shown on the floor plans of residential properties like bathtubs, wash basins, water closets, shower cubicles, sink units, cabinets (if any) etc. are prepared in accordance with the latest approved building plans. Their shapes, dimensions, scales may be differed from the fittings and fitments actually provided and they are for indication and reference only.