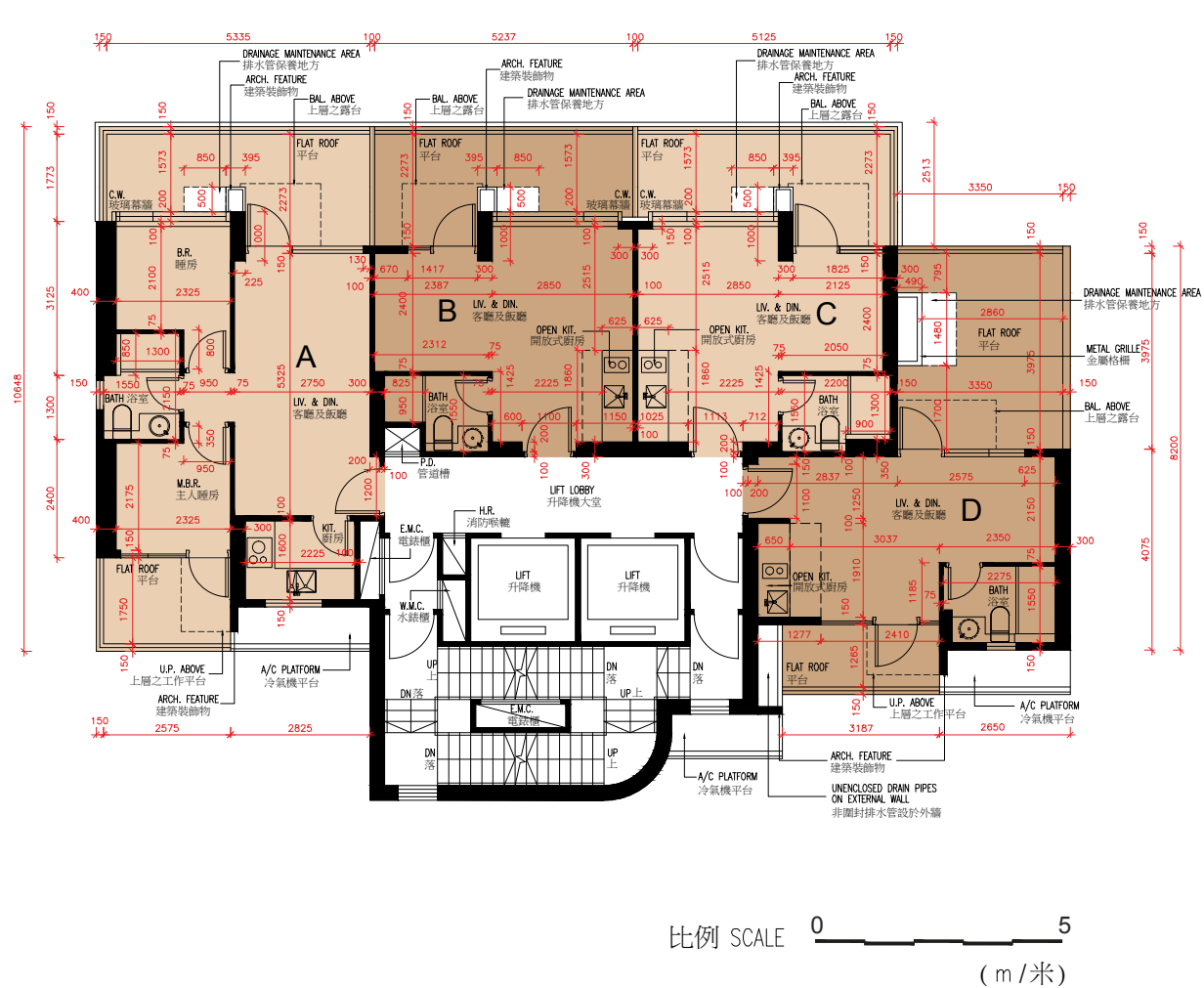


# 11 FLOOR PLANS OF RESIDENTIAL PROPERTIES IN THE DEVELOPMENT

## 發展項目的住宅物業的樓面平面圖

### 3/F Floor Plan 3樓樓面平面圖



Description 描述	Flat 單位			
	A	B	C	D
Floor-to-floor height (refers to the height between the top surface of the structural slab of a floor and the top surface of the structural slab of its immediate upper floor) of each residential property (mm) 每個住宅物業的層與層之間的高度 (指該樓層之石屎地台面與上一層石屎地台面之高度距離) (毫米)	2950 3150 3500 3700 4050	2950 3150 3500 3700		2950 3150 3500 3700 4050
Thickness of the floor slabs (excluding plaster) of each residential property (mm) 每個住宅物業的樓板 (不包括灰泥) 厚度 (毫米)	150			

The internal areas of the residential properties on the upper floors will generally be slightly larger than those on the lower floors because of the reducing thickness of the structural walls on the upper floors. (Note: This statement required under Section 10(2)(e) in Part 1 of Schedule 1 of the Residential Properties (First-hand Sales) Ordinance is not applicable to the Development.)

因住宅物業的較高樓層的結構牆的厚度遞減，較高樓層的內部面積，一般比較低樓層的內部面積稍大。(註：此根據《一手住宅物業銷售條例》附表1第一部第10(2)(e)條所規定的陳述並不適用於本發展項目。)

Note:

- (a) The dimensions of floor plans are all structural dimensions in millimetres.
- (b) Please refer to page 20 of this sales brochure for remarks, legend of the terms and abbreviations shown in this floor plan.

備註：

- (a) 樓面平面圖尺寸所列的數字為以毫米標示的建築結構尺寸。
- (b) 有關樓面平面圖中顯示的附註，名詞及簡稱之圖例請參閱本售樓說明書第20頁。