

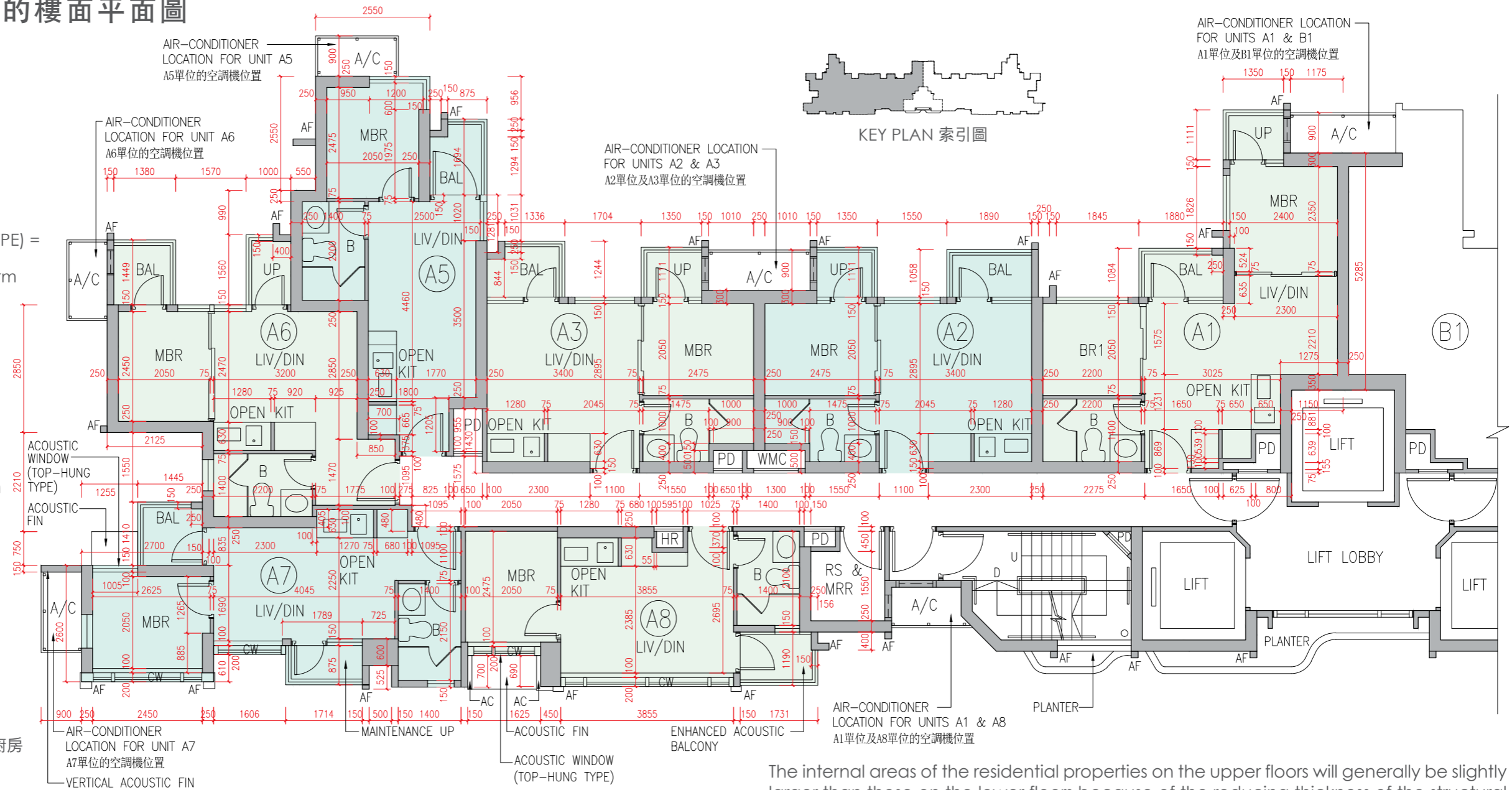
Floor plans of residential properties in the development

發展項目的住宅物業的樓面平面圖

31/F
31樓

LEGEND 圖例

- AC = Aluminium Cladding 鋁覆蓋板
- ACOUSTIC FIN = 隔音簷
- ACOUSTIC WINDOW (TOP-HUNG TYPE) = 減音窗(上懸式)
- A/C = Air-Conditioner Platform 空調機平台
- AF = Architectural Feature 建築裝飾
- B = Bathroom 浴室
- BAL = Balcony 露台
- BR = Bedroom 睡房
- CFR = Common Flat Roof 公用平台
- CW = Curtain Wall 幕牆
- D = Down 下
- EMR = Electrical Meter Room 電錶房
- ENHANCED ACOUSTIC BALCONY = 強效減音露台
- HR = Hose Reel 消防喉轆
- LIFT = 升降機
- LIFT LOBBY = 升降機大堂
- LIV/DIN = Living/Dining Room 客/飯廳
- MAINTENANCE UP = Maintenance Utility Platform 維修用工作平台
- MBR = Master Bedroom 主人睡房
- OPEN KIT = Open Kitchen 開放式廚房
- PD = Pipe Duct 管道槽
- PLANTER = 花槽
- RS & MRR = Refuse Storage & Material Recovery Room 垃圾及物料回收室
- U = Up 上
- UP = Utility Platform 工作平台
- VERTICAL ACOUSTIC FIN = 豎立隔音簷
- WMC = Water Meter Cabinet 水錶箱



The internal areas of the residential properties on the upper floors will generally be slightly larger than those on the lower floors because of the reducing thickness of the structural walls on the upper floors. (This statement does not apply to the residential properties in the Development because the design of the Development is such that the reducing thickness of the structural walls of residential properties on the upper floors does not increase the internal areas of those residential properties.)

因住宅物業的較高樓層的結構牆的厚度遞減，較高樓層的內部面積，一般比較低樓層的內部面積稍大。(不適用於發展項目內的住宅物業，因為發展項目的設計是較高樓層的住宅物業的結構牆的厚度遞減不會增加該等住宅物業的內部面積。)

Remarks:

1. The dimensions in the floor plans are all structural dimensions in millimetre.
2. For details of the noise mitigation-measures, please refer to the Relevant Information section in this sales brochure.
3. Aluminium cladding (being one of the noise mitigation measures - Sound Absorption Material) will be installed at the enhanced acoustic balcony of each Units A8 and B8 on 31/F. Please refer to "the Fittings, Finishes and Appliances" and "the Relevant Information" section(s) in this sales brochure for details.

備註:

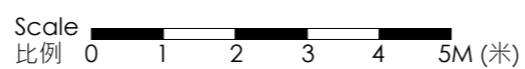
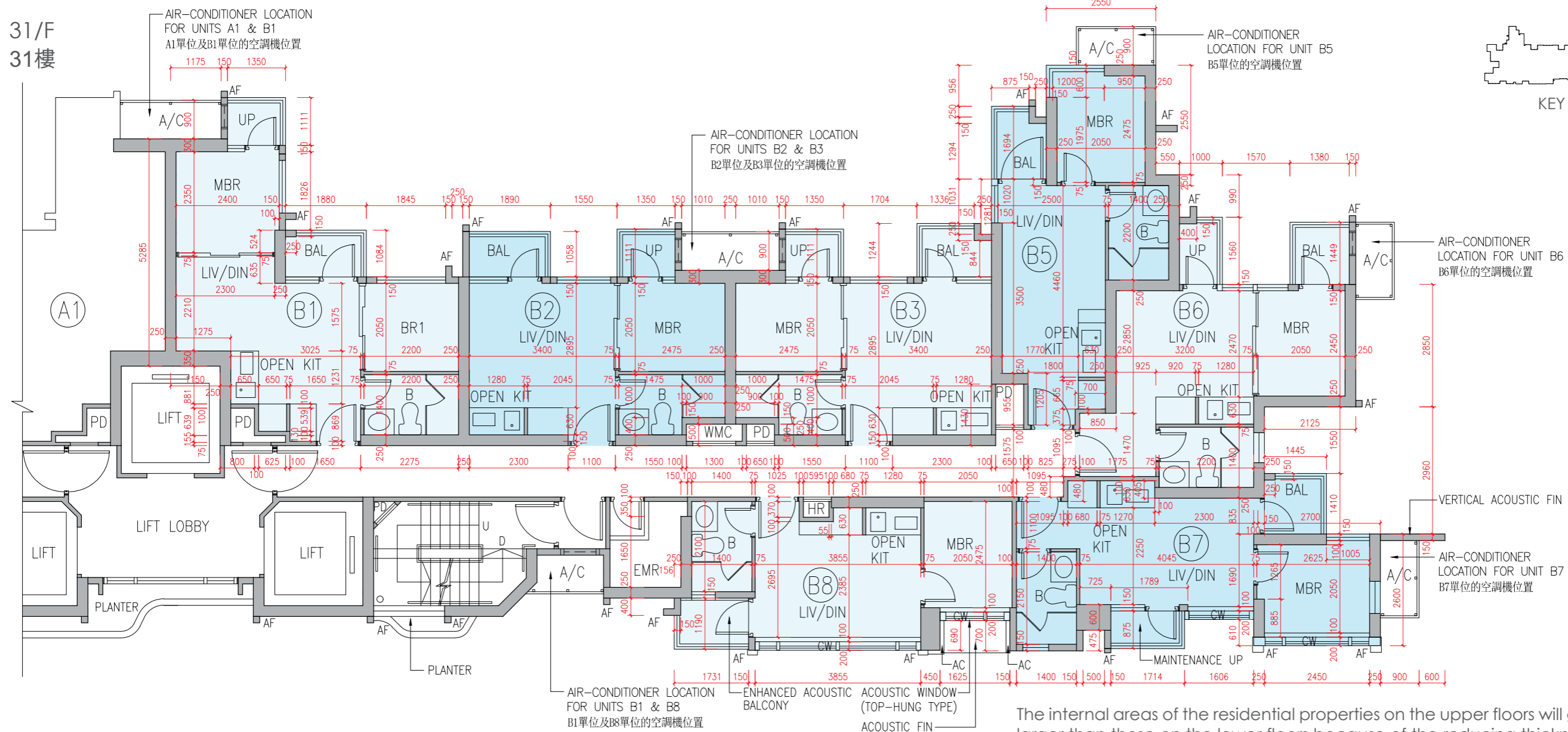
1. 樓面平面圖之尺規所列數字為以毫米標示之建築結構尺寸。
2. 有關舒緩噪音措施之詳情，請參閱本售樓說明書的有關資料章節。
3. 31樓各A8及B8單位的強效減音露台將設有鋁覆蓋板(作為舒緩噪音措施之一 - 吸音物料)，詳情請參閱本售樓說明書的「裝置、裝修物料及設備」和「有關資料」章節。

Description 描述	Unit 單位						
	A1	A2	A3	A5	A6	A7	A8
Floor-to-floor height (refers to the height between the top surface of the structural slab of a floor and the top surface of the structural slab of its immediate upper floor) of each residential property (m) 每個住宅物業的層與層之間的高度(指該樓層之石屎地台面與上一層石屎地台面之高度距離)(米)	3.150 3.175 3.475 3.575 3.775 3.825	3.150 3.175 3.275 3.475 3.525 3.825	3.150 3.175 3.275 3.475 3.525	3.150 3.175 3.275 3.525	3.150 3.175 3.275 3.525	3.150 3.175 3.475 3.525	3.150 3.175 3.475 3.525
Thickness of the floor slabs (excluding plaster) of each residential property (mm) 每個住宅物業的樓板(不包括灰泥)厚度(毫米)	150, 175, 200					150 175	150 175 200

Floor plans of residential properties in the development

發展項目的住宅物業的樓面平面圖

31/F
31樓



The internal areas of the residential properties on the upper floors will generally be slightly larger than those on the lower floors because of the reducing thickness of the structural walls on the upper floors. (This statement does not apply to the residential properties in the Development because the design of the Development is such that the reducing thickness of the structural walls of residential properties on the upper floors does not increase the internal areas of those residential properties.)

因住宅物業的較高樓層的結構牆的厚度遞減，較高樓層的內部面積，一般比較低樓層的內部面積稍大。(不適用於發展項目內的住宅物業，因為發展項目的設計是較高樓層的住宅物業的結構牆的厚度遞減不會增加該等住宅物業的內部面積。)

Remarks:

- The dimensions in the floor plans are all structural dimensions in millimetre.
- For details of the noise mitigation-measures, please refer to the Relevant Information section in this sales brochure.
- Aluminium cladding (being one of the noise mitigation measures - Sound Absorption Material) will be installed at the enhanced acoustic balcony of each Units A8 and B8 on 31/F. Please refer to "the Fittings, Finishes and Appliances" and "the Relevant Information" section(s) in this sales brochure for details.

備註:

- 樓面平面圖之尺規所列數字為以毫米標示之建築結構尺寸。
- 有關舒緩噪音措施之詳情，請參閱本售樓說明書的有關資料章節。
- 31樓各A8及B8單位的強效減音露台將設有鋁覆蓋板(作為舒緩噪音措施之一 - 吸音物料)，詳情請參閱本售樓說明書的「裝置、裝修物料及設備」和「有關資料」章節。

Description 描述	Unit 單位						
	B1	B2	B3	B5	B6	B7	B8
Floor-to-floor height (refers to the height between the top surface of the structural slab of a floor and the top surface of the structural slab of its immediate upper floor) of each residential property (m) 每個住宅物業的層與層之間的高度(指該樓層之石屎地台面與上一層石屎地台面之高度距離)(米)	3.150 3.175 3.475 3.575 3.775 3.825	3.150 3.175 3.275 3.475 3.525 3.825	3.150 3.175 3.275 3.475 3.525	3.150 3.175 3.200 3.275 3.525	3.150 3.175 3.200 3.275 3.525	3.150 3.175 3.275 3.475 3.525	3.150 3.175 3.275 3.475 3.525
Thickness of the floor slabs (excluding plaster) of each residential property (mm) 每個住宅物業的樓板(不包括灰泥)厚度(毫米)	150, 175, 200					150 175	150 175 200