

9/F & 11/F (Lower Duplex) 9樓及11樓(複式單位下層)



Scale 比例: 0 1 2 3 4 5M(米)

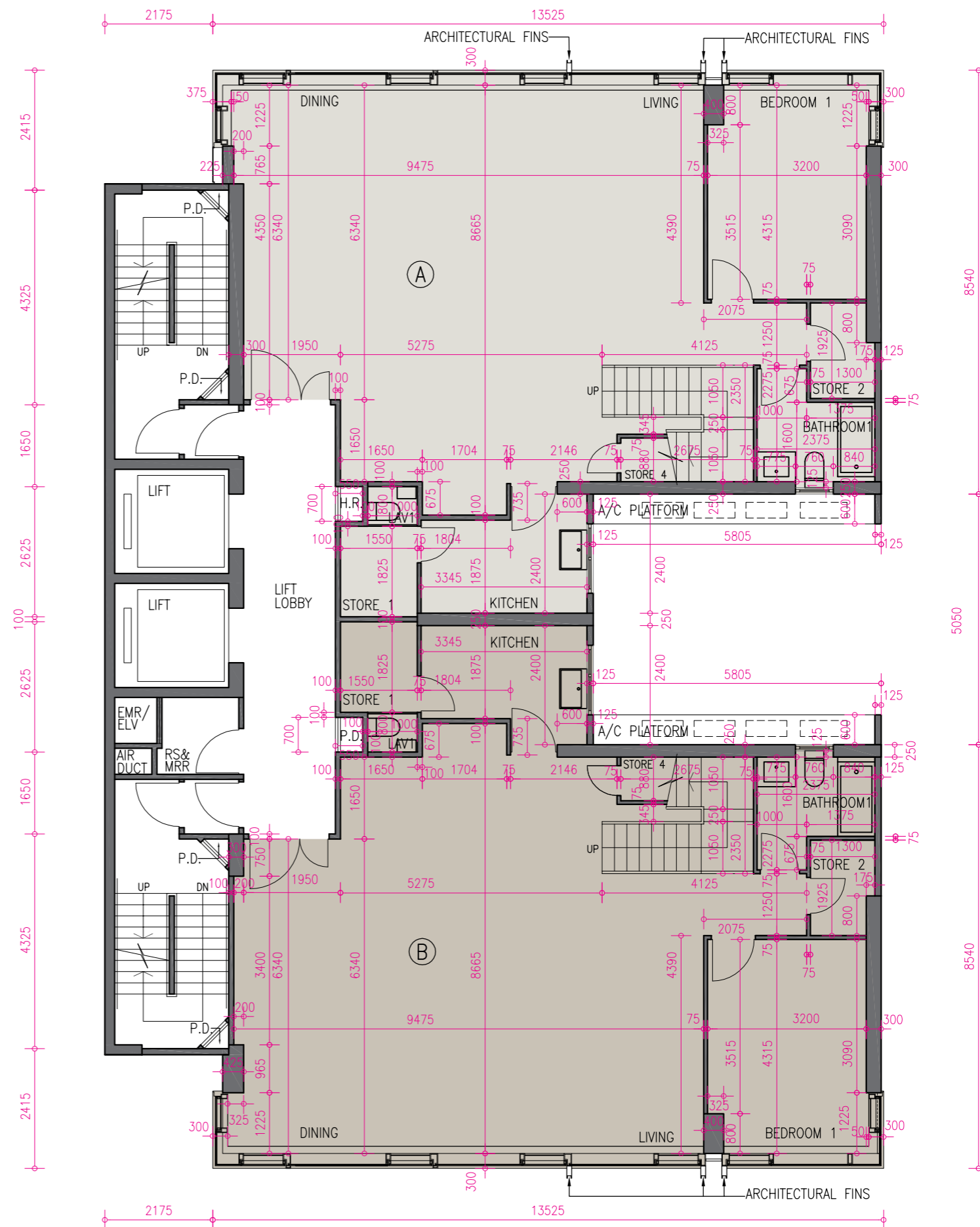
	A	B
The thickness of the floor slabs (excluding plaster) of each residential property (mm) 每個住宅物業的樓板(不包括灰泥)的厚度(毫米)	150, 300	150, 300
The floor-to-floor height of each residential property (mm) 每個住宅物業的層與層之間的高度(毫米)	3500	3500

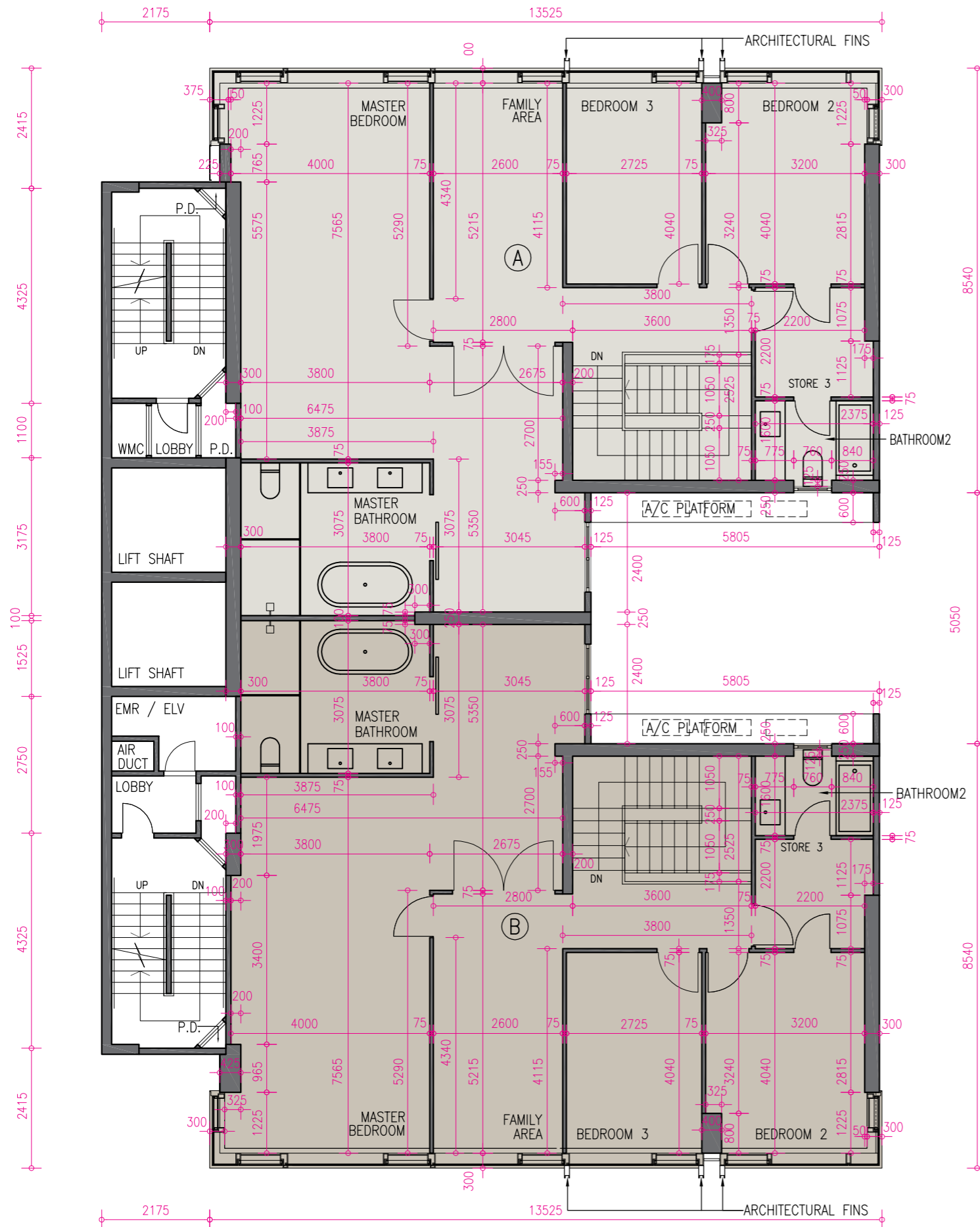
The internal areas of the residential properties on the upper floors will generally be slightly larger than those on the lower floors because of the reducing thickness of the structural walls on the upper floor (Not applicable to this development).

因住宅物業的較高樓層的結構牆的厚度遞減，較高樓層的內部面積，一般比較低樓層的內部面積稍大(不適用於本發展項目)。

Note: The dimensions in the floor plan are all structural dimensions in millimeter. Please refer the last page of this section for explanatory notes, legend of terms and abbreviations shown in the floor plan above.

備註：樓面平面圖之尺寸所列數字為以毫米標示之建築結構尺寸。以上樓面平面圖中顯示之附註、顯示的名詞及簡稱，請參閱本節最後一頁。





10/F&12/F (Upper Duplex)
10樓及12樓(複式單位上層)

Scale 比例: 0 1 2 3 4 5M (米)

	A	B
The thickness of the floor slabs (excluding plaster) of each residential property (mm) 每個住宅物業的樓板(不包括灰泥)的厚度(毫米)	150, 200, 250	150, 200, 250
The floor-to-floor height of each residential property (mm) 每個住宅物業的層與層之間的高度(毫米)	3500	3500

The internal areas of the residential properties on the upper floors will generally be slightly larger than those on the lower floors because of the reducing thickness of the structural walls on the upper floor (Not applicable to this development).

因住宅物業的較高樓層的結構牆的厚度遞減，較高樓層的內部面積，一般比較低樓層的內部面積稍大(不適用於本發展項目)。

Note: The dimensions in the floor plan are all structural dimensions in millimeter. Please refer the last page of this section for explanatory notes, legend of terms and abbreviations shown in the floor plan above.

備註：樓面平面圖之尺寸所列數字為以毫米標示之建築結構尺寸。以上樓面平面圖中顯示之附註、顯示的名詞及簡稱，請參閱本節最後一頁。