

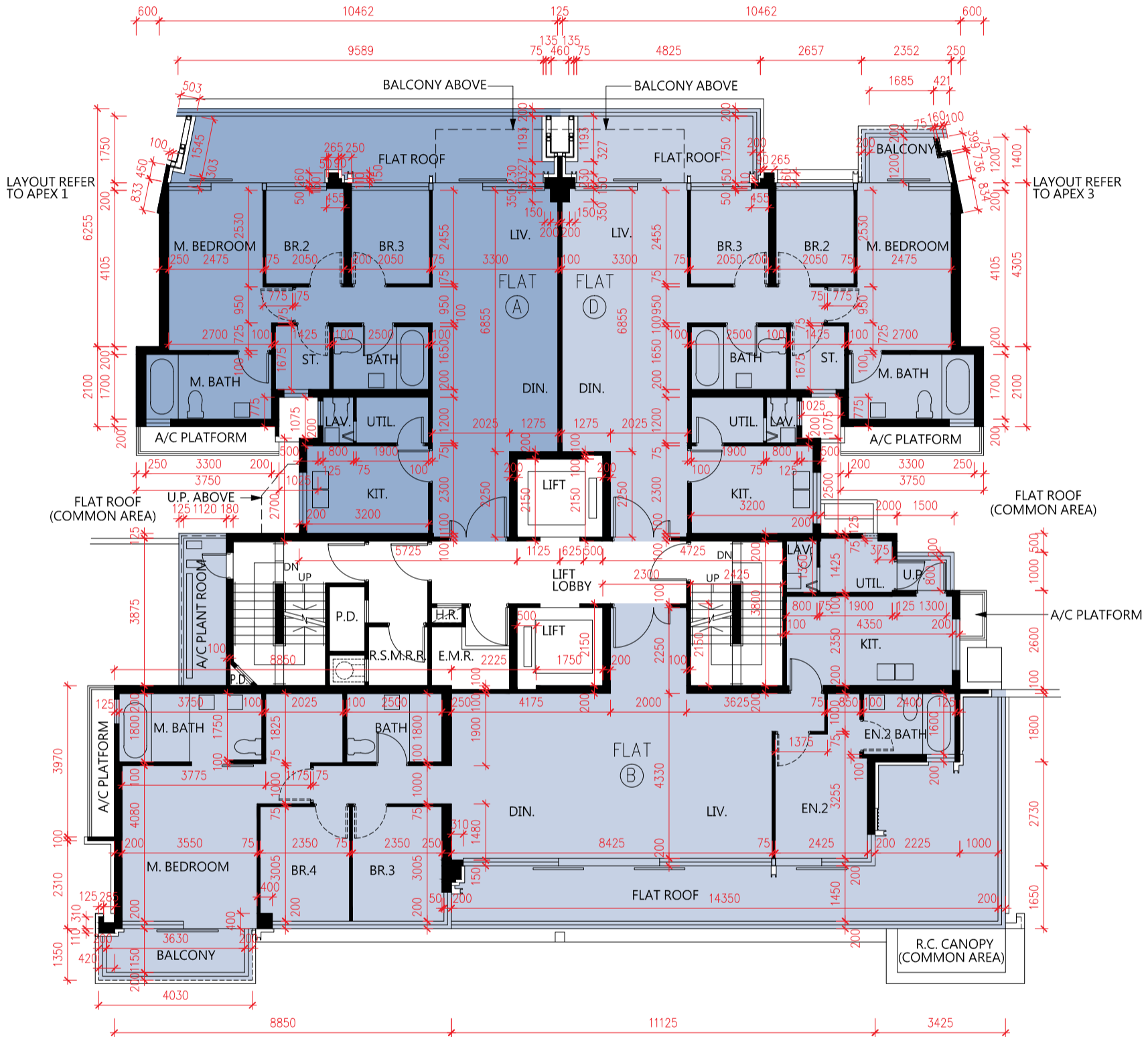


# Floor Plans of Residential Properties in the Development

## 發展項目的住宅物業的樓面平面圖

### Apex 2 2/F Floor Plan

### Apex 2 座2樓平面圖



SCALE 比例尺: 7.5M(米)

1. The floor-to-floor height of each residential property for 2/F : (Flat A and Flat D) : 3000mm, 3225mm and 3300mm ; (Flat B) : 2800mm, 2950mm, 3000mm, 3225mm and 3300mm.
2. The thickness of the floor slabs (excluding plaster) of each residential property for 2/F : 150mm, 175mm and 200mm.
3. The internal areas of the residential properties on the upper floors will generally be slightly larger than those on the lower floors because of reducing thickness of the structural walls on the upper floors.

Notes:

- The dimensions of floor plans are all structural dimensions in millimeter.
- Please refer to P.AL01 and P.AL02 of this sales brochure for remarks and legend of terms and abbreviations shown on this floor plan.

1. 2樓每個住宅物業的層與層之間的高度:(A單位及D單位)為3000毫米、3225毫米及3300毫米;(B單位)為2800毫米、2950毫米、3000毫米、3225毫米及3300毫米。
2. 2樓每個住宅物業的樓板(不包括灰泥)的厚度為150毫米、175毫米及200毫米。
3. 因住宅物業的較高樓層的結構牆的厚度遞減，較高樓層的內部面積，一般比較低樓層的內部面積稍大。

備註:

- 樓面平面圖之尺規所列數字為以毫米標示之建築結構尺寸。
- 請參閱本售樓說明書第AL01頁及AL02頁之附註及圖例以協助解讀此部分的平面圖及其顯示之名詞及簡稱。