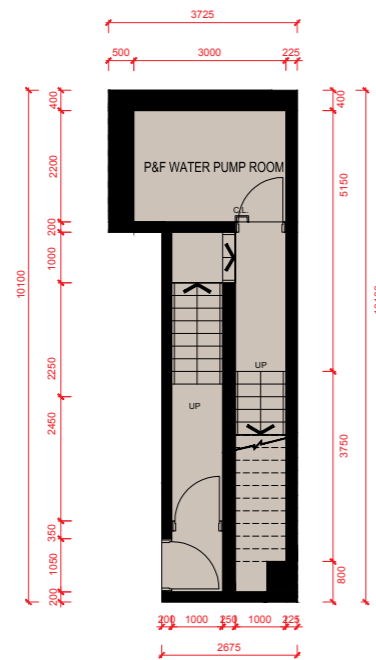
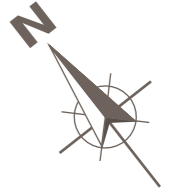
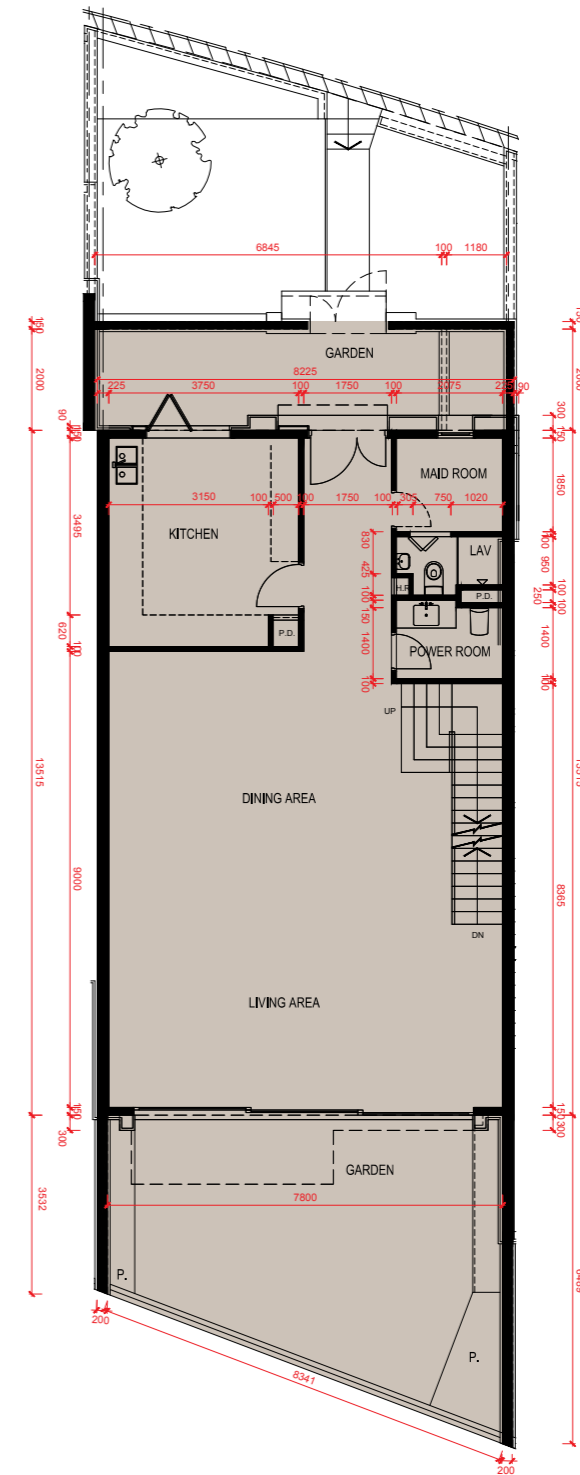


# Floor Plans of Residential Properties in the Development 發展項目的住宅物業的樓面平面圖

65 Lai Ping Road  
麗坪路65號



Carpark Floor Plan  
停車場平面圖



Ground Floor Plan  
地下平面圖

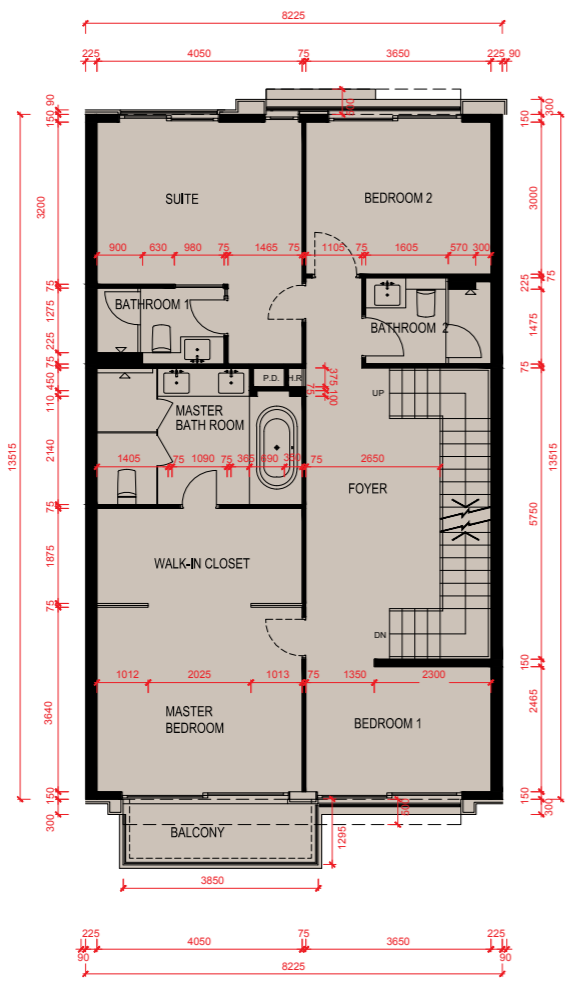
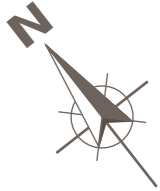
1. The floor-to-floor height of 65 Lai Ping Road: 4500mm for Carpark Floor, 4250mm for G/F and 3500mm for 1/F.
2. The thickness of the floor slabs (excluding plaster) of 65 Lai Ping Road: 150mm, 175mm, 200mm, 250mm and 300mm.
3. The internal areas of the residential properties on the upper floors will generally be slightly larger than those on the lower floors because of the reducing thickness of the structural walls on the upper floors.
4. Please refer to page 17 of this sales brochure for remarks, legend of the terms and abbreviations shown in the floor plans.
5. The dimensions of floor plans are all structural dimensions in millimeter.

1. 麗坪路65號的層與層之間的高度：停車場為4500毫米、地下為4250毫米及1樓為3500毫米。
2. 麗坪路65號的樓板（不包括灰泥）的厚度：150毫米、175毫米、200毫米、250毫米及300毫米。
3. 因住宅物業的較高樓層的結構牆的厚度遞減，較高樓層的內部面積，一般比較低樓層的內部面積稍大。
4. 平面圖中顯示之附註、名詞及簡稱請參閱本售樓說明書第17頁。
5. 平面圖之尺規所列數字為以毫米標示之建築結構尺寸。

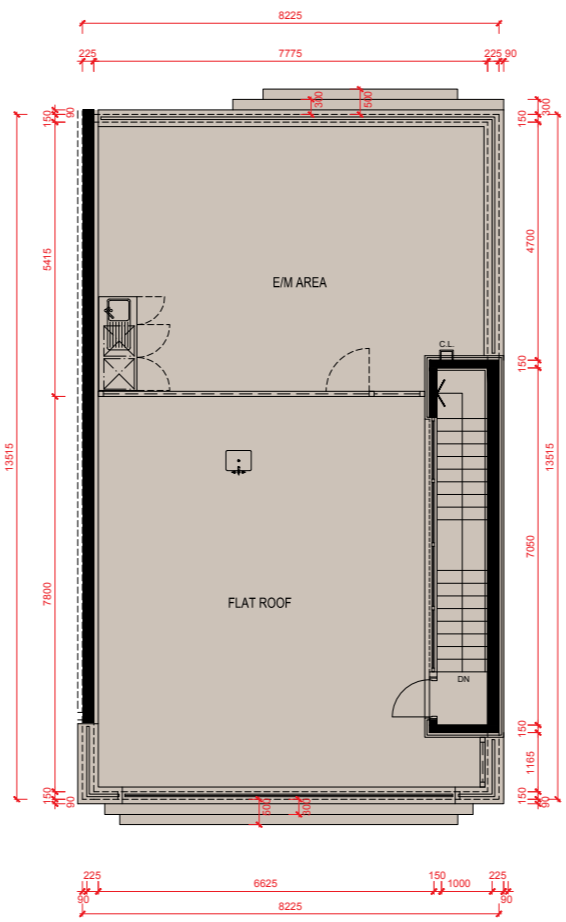
0M/米      5M/米  
Scale:      比例

# Floor Plans of Residential Properties in the Development 發展項目的住宅物業的樓面平面圖

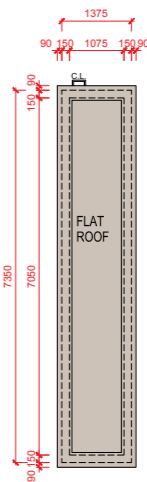
65 Lai Ping Road  
麗坪路65號



First Floor Plan  
1樓平面圖



Roof Plan  
天台平面圖



Top Roof Plan  
頂層天台平面圖

0M/米      5M/米  
Scale: 比例