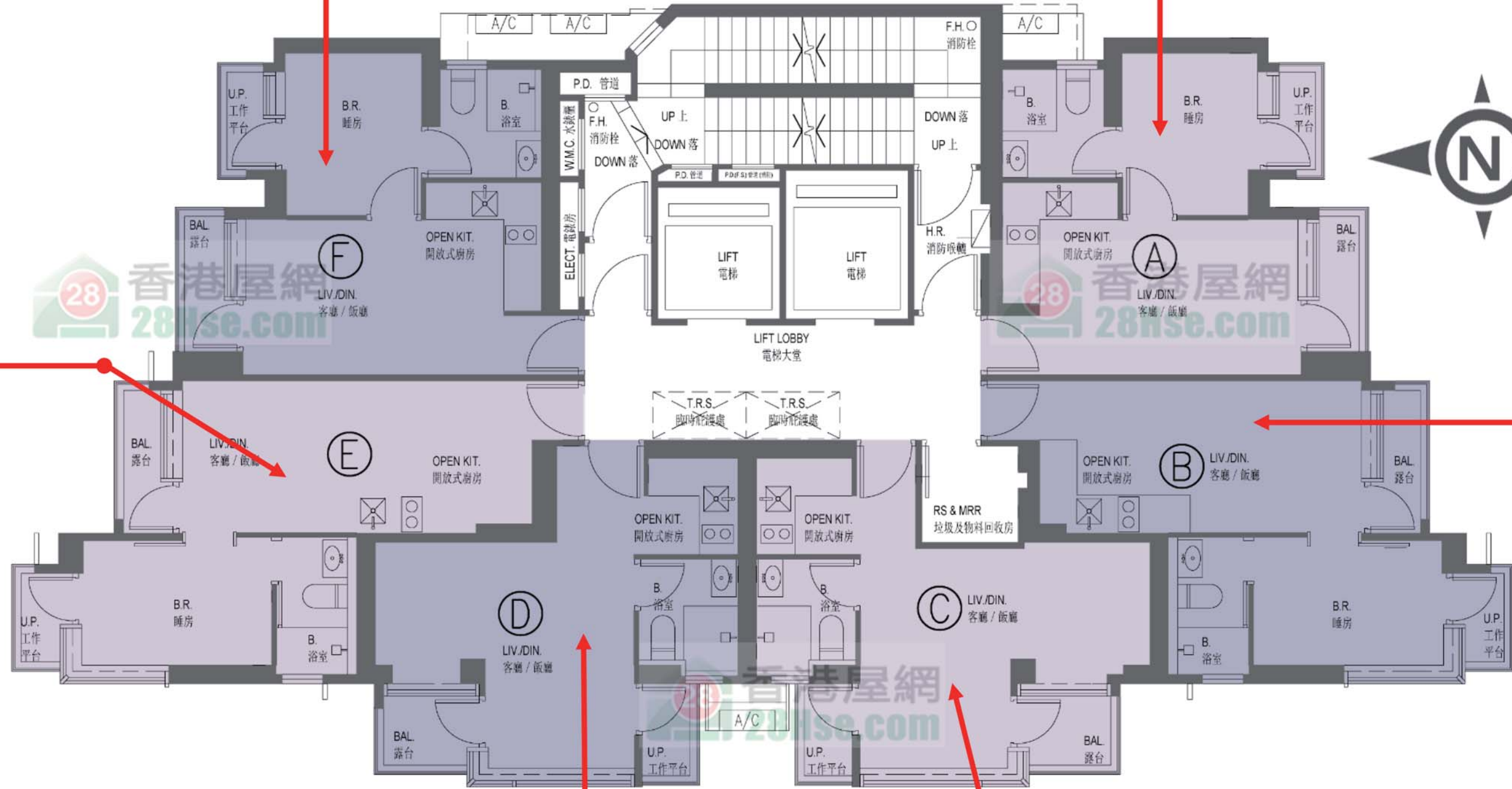


# 傲寓 Sablier

F		
訂價	即供價 (4%)	
1房連套房 333'		
19	\$7,902,000 @\$23,730	\$7,585,920 @\$22,781
18	\$7,851,000 @\$23,577	\$7,536,960 @\$22,634
17	\$7,720,000 @\$23,183	\$7,411,200 @\$22,256

E		
訂價	即供價 (4%)	
1房連套房 340'		
19	\$7,970,000 @\$23,441	\$7,651,200 @\$22,504
18	\$7,917,000 @\$23,285	\$7,600,320 @\$22,354
17	\$7,787,000 @\$22,903	\$7,475,520 @\$21,987
6	\$7,089,000 @\$20,850	\$6,805,440 @\$20,016
5	\$6,981,000 @\$20,532	\$6,701,760 @\$19,711
3	\$6,927,000 @\$20,374	\$6,649,920 @\$19,559



A		
訂價	即供價 (4%)	
1房連套房 328'		
19	\$7,963,000 @\$24,277	\$7,644,480 @\$23,306
18	\$7,908,000 @\$24,110	\$7,591,680 @\$23,145
17	\$7,788,000 @\$23,744	\$7,476,480 @\$22,794
11	\$7,394,000 @\$22,543	\$7,098,240 @\$21,641
10	\$7,356,000 @\$22,427	\$7,061,760 @\$21,530
9	\$7,319,000 @\$22,314	\$7,026,240 @\$21,421
7	\$7,207,000 @\$21,973	\$6,918,720 @\$21,094

B		
訂價	即供價 (4%)	
1房連套房 308'/331'		
29	\$7,825,000 @\$25,406	\$7,512,000 @\$24,390
19	\$7,670,000 @\$23,172	\$7,363,200 @\$22,245
18	\$7,633,000 @\$23,060	\$7,327,680 @\$22,138
17	\$7,551,000 @\$22,813	\$7,248,960 @\$21,900
13	\$7,447,000 @\$22,498	\$7,149,120 @\$21,599
12	\$7,410,000 @\$22,387	\$7,113,600 @\$21,491
11	\$7,373,000 @\$22,275	\$7,078,080 @\$21,384
10	\$7,336,000 @\$22,163	\$7,042,560 @\$21,277
9	\$7,301,000 @\$22,057	\$7,008,960 @\$21,175
8	\$7,264,000 @\$21,946	\$6,973,440 @\$21,068
7	\$7,184,000 @\$21,704	\$6,896,640 @\$20,836
6	\$7,148,000 @\$21,595	\$6,862,080 @\$20,731

D		
訂價	即供價 (4%)	
開放式 300'/262'		
28	\$7,649,000 @\$25,497	\$7,343,040 @\$24,477
27	\$7,520,000 @\$25,067	\$7,219,200 @\$24,064
26	\$7,460,000 @\$24,867	\$7,161,600 @\$23,872
25	\$7,399,000 @\$24,663	\$7,103,040 @\$23,677
23	\$7,340,000 @\$24,467	\$7,046,400 @\$23,488
10	\$7,028,000 @\$23,427	\$6,746,880 @\$22,490
9	\$6,993,000 @\$23,310	\$6,713,280 @\$22,378
8	\$6,960,000 @\$23,200	\$6,681,600 @\$22,272
7	\$6,858,000 @\$22,860	\$6,583,680 @\$21,946
6	\$6,825,000 @\$22,750	\$6,552,000 @\$21,840
2	\$5,970,000 @\$22,786	\$5,731,200 @\$21,875

C		
訂價	即供價 (4%)	
開放式 302'/305'/304'/266'		
29	\$7,762,000 @\$25,702	\$7,451,520 @\$24,674
28	\$7,687,000 @\$25,203	\$7,379,520 @\$24,195
27	\$7,569,000 @\$24,816	\$7,266,240 @\$23,824
26	\$7,508,000 @\$24,616	\$7,207,680 @\$23,632
25	\$7,447,000 @\$24,416	\$7,149,120 @\$23,440
23	\$7,386,000 @\$24,216	\$7,090,560 @\$23,248
10	\$7,045,000 @\$23,174	\$6,763,200 @\$22,247
9	\$7,010,000 @\$23,059	\$6,729,600 @\$22,137
8	\$6,975,000 @\$22,944	\$6,696,000 @\$22,026
7	\$6,907,000 @\$22,720	\$6,630,720 @\$21,812
2	\$6,225,000 @\$23,402	\$5,976,000 @\$22,466

以上單位訂價圖由28HSE製作  
製作日期：2020年9月24日  
資料來源：新盤網頁(傲寓)