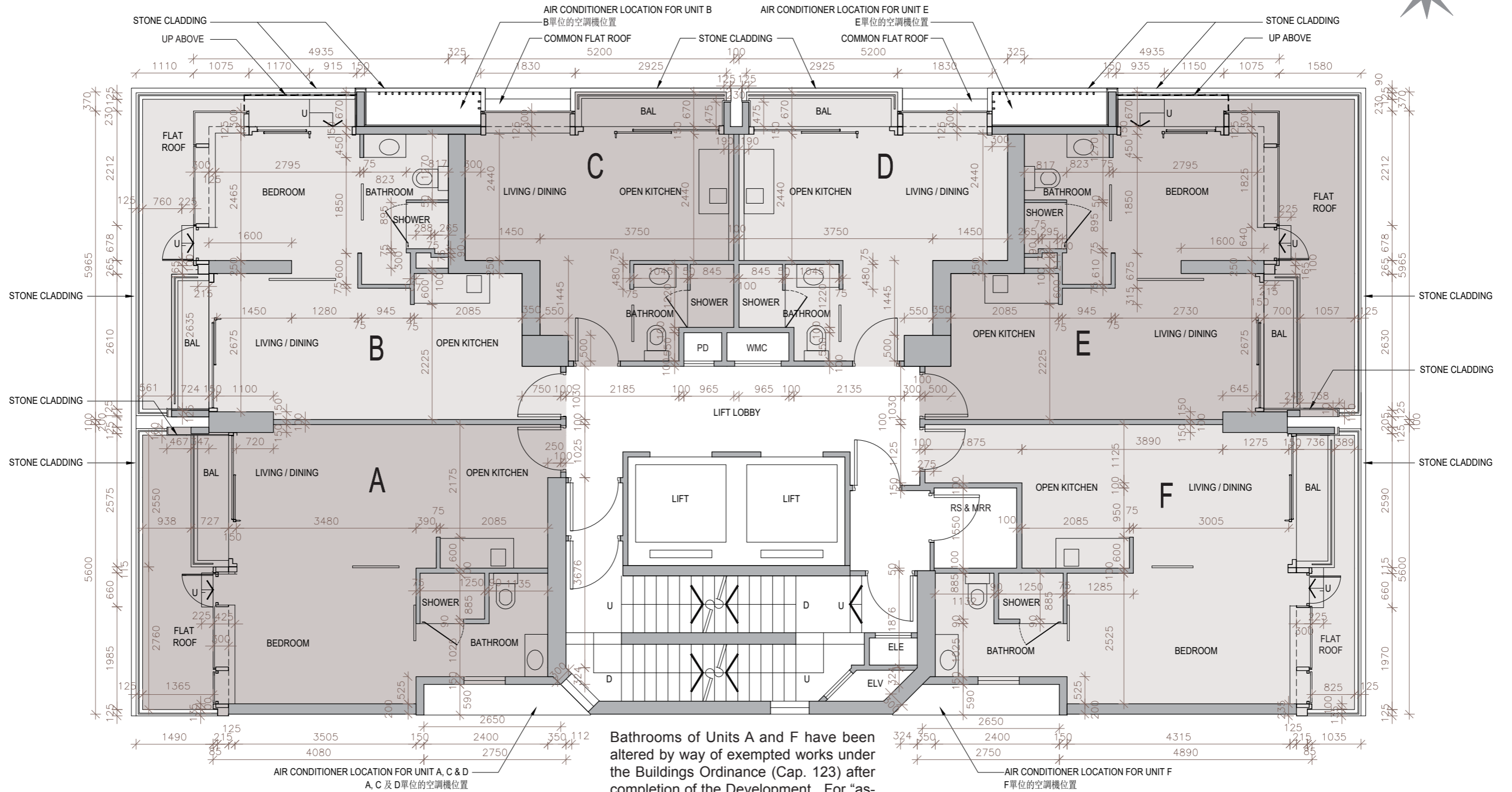
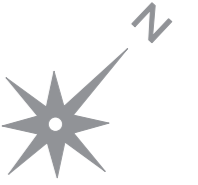
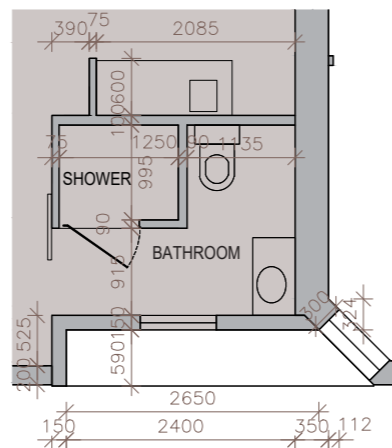


Floor plans of residential properties in the development

發展項目的住宅物業的樓面平面圖



The "as-is" layout of Bathroom of Unit A
A 單位浴室的現狀圖



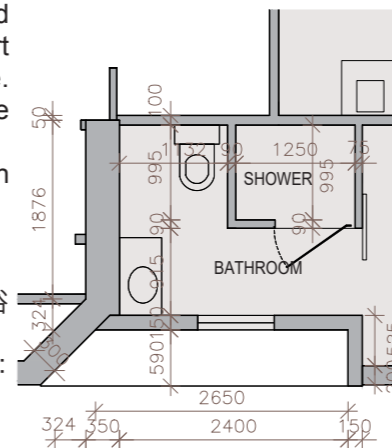
Bathrooms of Units A and F have been altered by way of exempted works under the Buildings Ordinance (Cap. 123) after completion of the Development. For "as-is" layout of the Bathrooms of Unit A and F, please refer to the corresponding part plan shown at the bottom of this page. The alteration work carried out to the bathrooms is listed below:

- Position of non-load bearing partition wall of shower cubicle was shifted.

A 單位及 F 單位的浴室在發展項目落成後進行在《建築物條例》(第 123 章)下獲豁免的工程而有所改動。A 單位及 F 單位的浴室的現狀請參閱本頁下方相應的部分現狀圖。有關 A 單位及 F 單位的浴室的改動如下:

- 淋浴間的非承重間隔牆位置移動。

The "as-is" layout of Bathroom of Unit F
F 單位浴室的現狀圖



Scale
比例 0 1 2 3 4 5M (米)