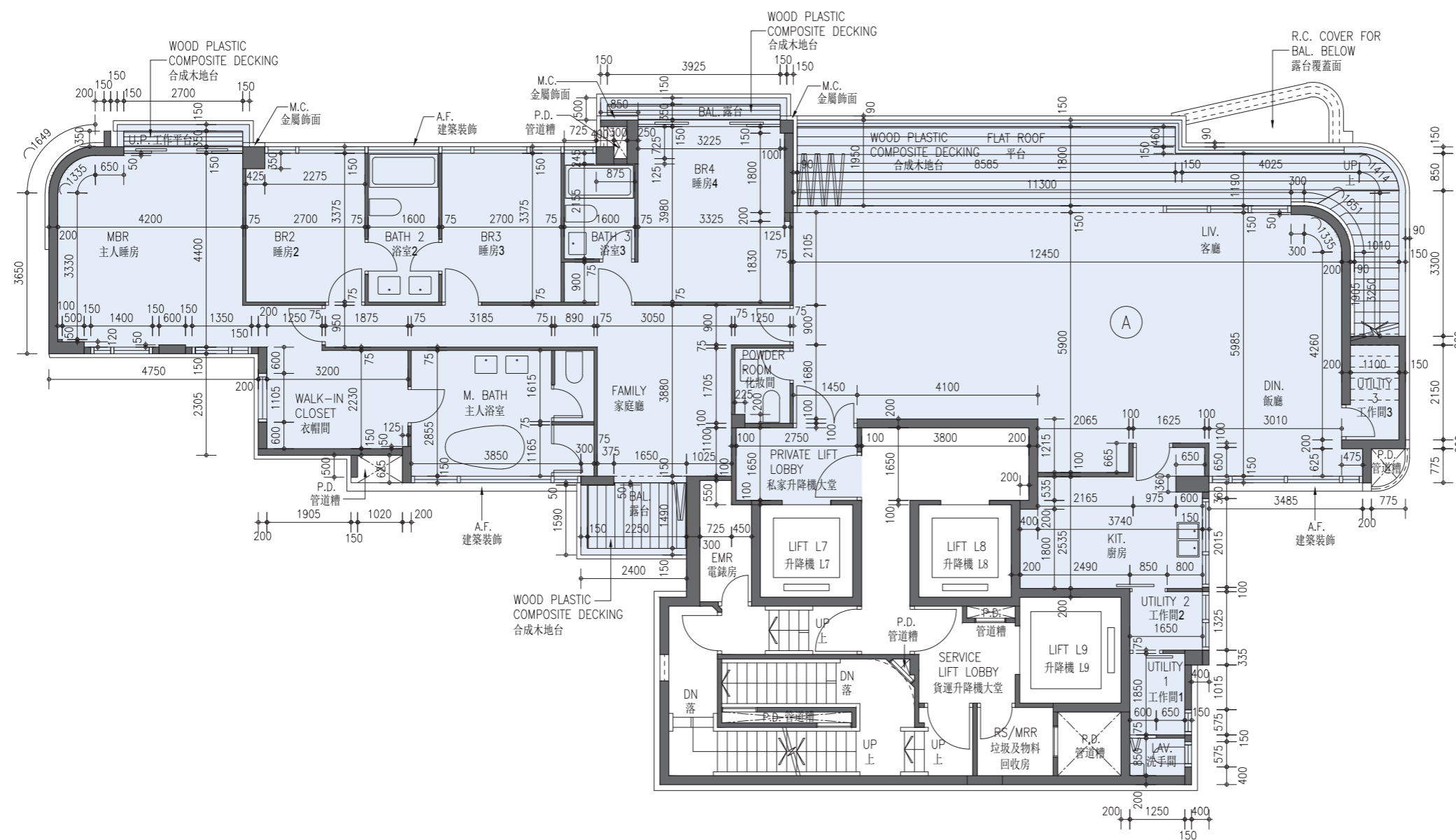


FLOOR PLANS OF RESIDENTIAL PROPERTIES IN THE DEVELOPMENT 發展項目的住宅物業的樓面平面圖

TOWER 3 | 23/F
第3座 | 23樓



Scale比例 : 0 2 4M(米)

Note: The dimensions of the floor plans are all structural dimensions in millimeter.

備註：樓面平面圖之尺規所列數字為以毫米標示之建築結構尺寸。

FLOOR PLANS OF RESIDENTIAL PROPERTIES IN THE DEVELOPMENT 發展項目的住宅物業的樓面平面圖

	Floor 樓層	Flat 單位
		A
The thickness of the floor slabs (excluding plaster) of each residential property (mm) 每個住宅物業的樓板(不包括灰泥)的厚度(毫米)	23/F 23樓	150,200,300
The floor-to-floor height of each residential property (mm) 每個住宅物業的層與層之間的高度(毫米)	23/F 23樓	3580, 3780, 3880, 3930, 4080, 4180, 4280

The internal areas of the residential properties on the upper floors will generally be slightly larger than those on the lower floors because of the reducing thickness of the structural walls on the upper floors. (Note: This statement required in Section 10(2)(e) in Part 1 of Schedule 1 of the Residential Properties (First-hand Sales) Ordinance (Cap.621) is not applicable to the Development)

Note:

"Floor-to-floor height" refers to the height between the top surface of the structural slab of a floor and the top surface of the structural slab of its immediate upper floor.

因住宅物業的較高樓層的結構牆的厚度遞減，較高樓層的內部面積，一般比較低樓層的內部面積稍大。(註：此乃根據《一手住宅物業銷售條例》(第621章)附表1第1部第10(2)(e)條所規定的陳述並不適用於發展項目)

備註：

「層與層之間的高度」指該樓層之石屎地台面與上一層石屎地台面之高度距離。

