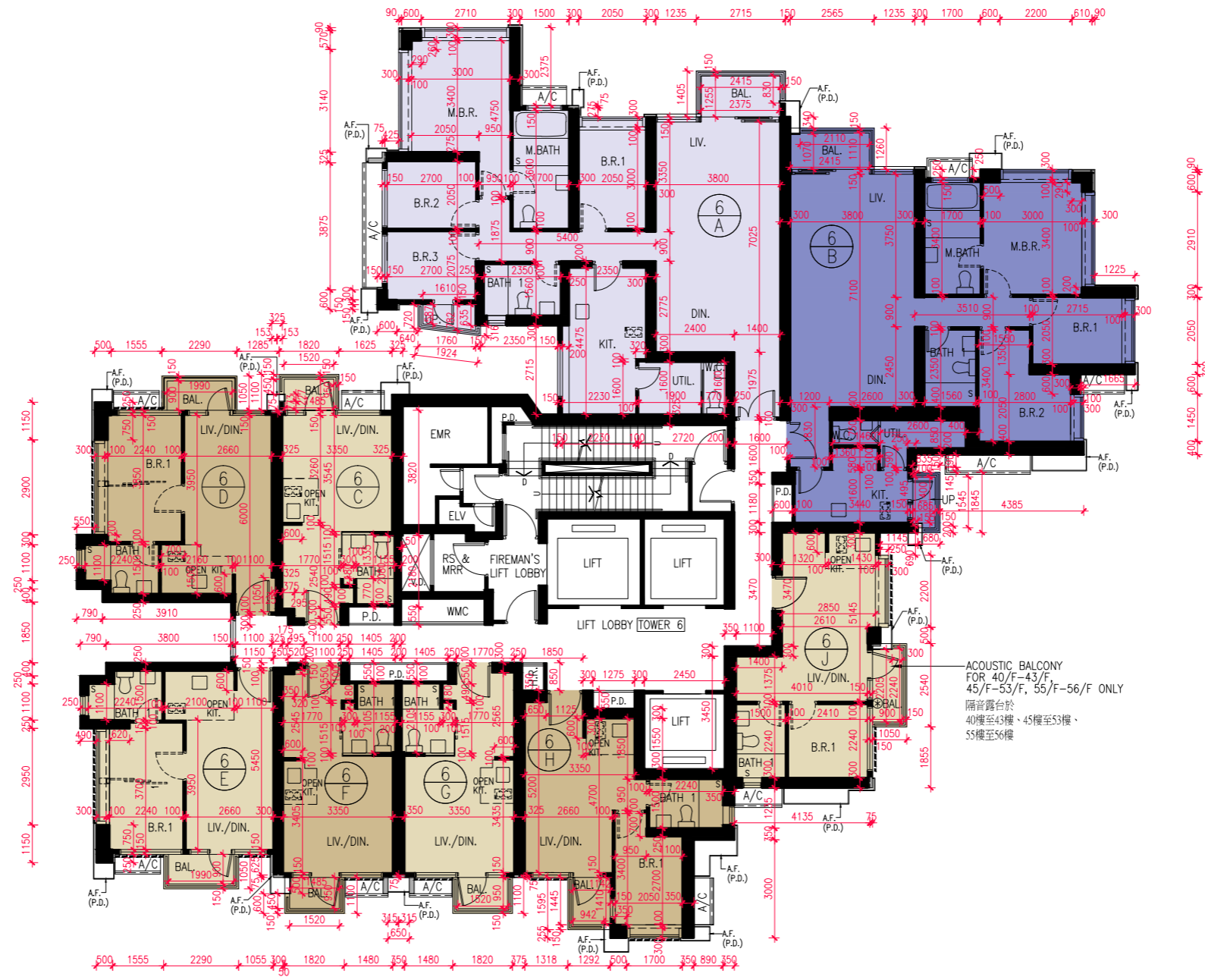


# FLOOR PLANS OF RESIDENTIAL PROPERTIES IN THE PHASE

## 期數的住宅物業的樓面平面圖

Tower 6 30/F-33/F, 35/F-43/F, 45/F-53/F and 55/F-56/F Floor Plan  
 第6座 30樓至33樓、35樓至43樓、45樓至53樓及55樓至56樓樓面平面圖



⊗ ACOUSTIC BALCONY 隔音露台

----- MAINTENANCE WINDOW 維修窗口

Remark: The openable parts shall be closed for the sake of noise mitigation.

附註：為了緩解噪音的目的，可開啟的部份應當關閉。

