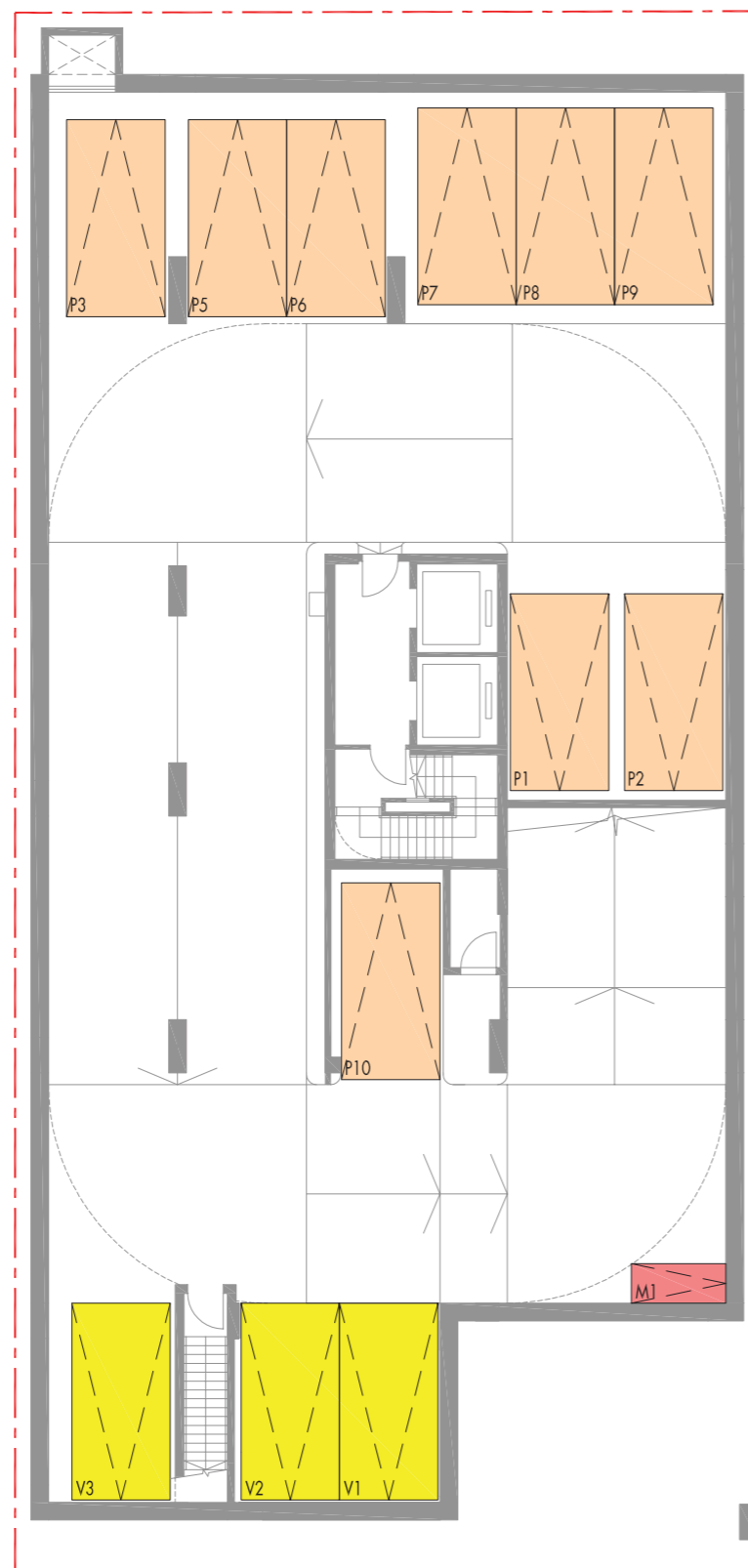


# FLOOR PLANS OF PARKING SPACES IN THE DEVELOPMENT

## 發展項目中的停車位的樓面平面圖

Basement Floor Plan  
地庫平面圖



Location, number, dimension and area of parking space  
停車位位置、數目、尺寸及面積

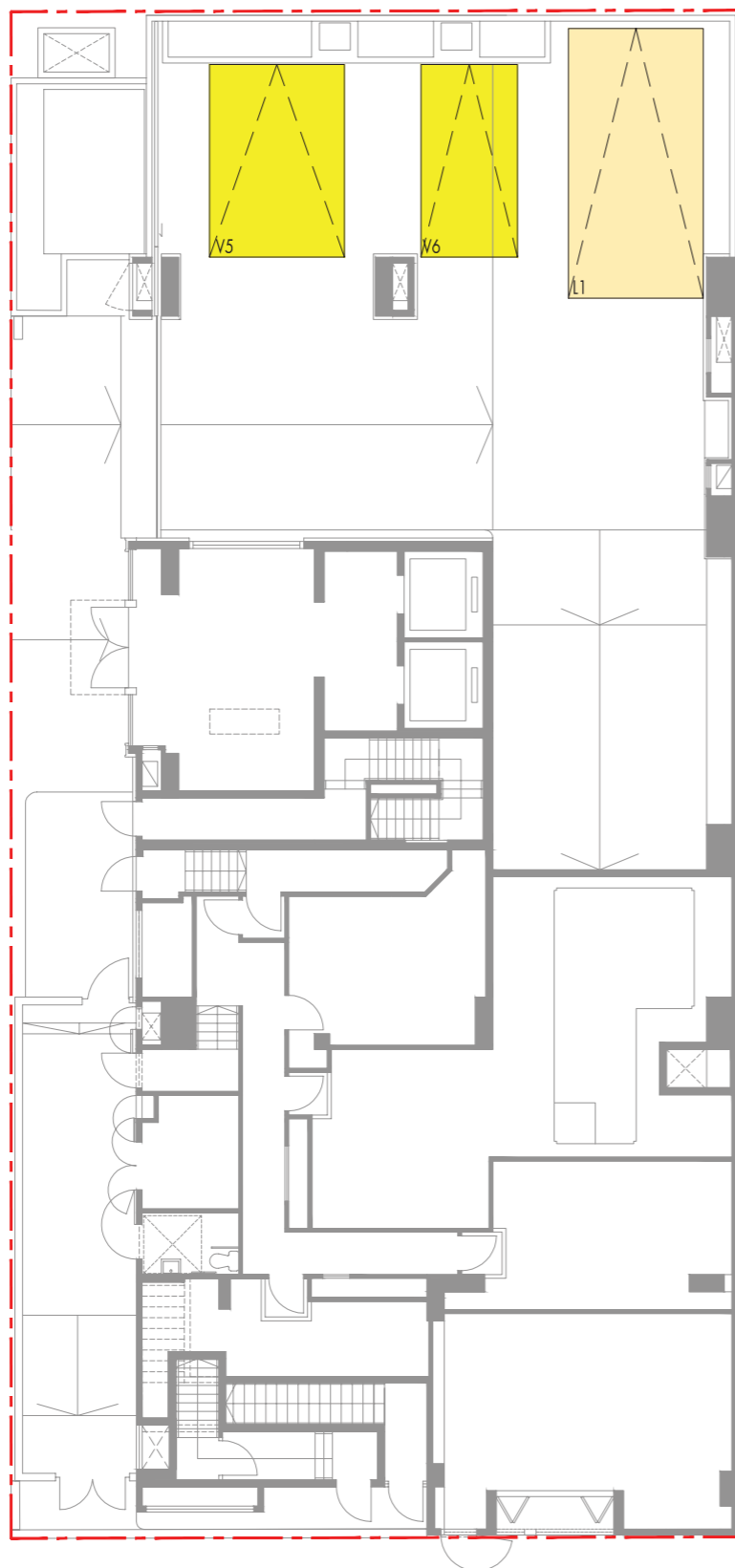
| Type of Parking Space<br>車位類別            | Floor<br>樓層    | Number<br>數目 | Parking Space No.<br>停車位編號 | Dimension (Length x Width) (m)<br>尺寸(長 x 闊)(米) | Area of each Parking Space (sq.m.)<br>每個停車位面積(平方米) |
|--|----------------|--------------|----------------------------|--|--|
| Residential Car Parking Space<br>住宅停車位   | Basement<br>地庫 | 9            | P1-P3,<br>P5-P10           | 5.0 x 2.5                                      | 12.5   |
| Parking Space for Motor Cycles<br>電單車停車位 | Basement<br>地庫 | 1            | M1                         | 2.4 x 1.0                                      | 2.4  |
| Visitor's Car Parking Space<br>訪客停車位     | Basement<br>地庫 | 3            | V1-V3                      | 5.0 x 2.5                                      | 12.5   |

--- Boundary of the Development  
發展項目的界線

# FLOOR PLANS OF PARKING SPACES IN THE DEVELOPMENT

## 發展項目中的停車位的樓面平面圖

G/F Floor Plan  
地下平面圖



Location, number, dimension and area of parking space  
停車位位置、數目、尺寸及面積

| Type of Parking Space<br>車位類別                       | Floor<br>樓層 | Number<br>數目 | Parking Space No.<br>停車位編號 | Dimension (Length x Width) (m)<br>尺寸(長 x 闊)(米) | Area of each Parking Space (sq.m.)<br>每個停車位面積(平方米) |
|---|-------------|--------------|----------------------------|--|--|
| Visitor's Car Parking Space<br>訪客停車位                | G/F<br>地下   | 1            | V6                         | 5.0 x 2.5                                      | 12.5   |
| Accessible Visitor's Car Parking Space<br>暢通易達訪客停車位 | G/F<br>地下   | 1            | V5                         | 5.0 x 3.5                                      | 17.5   |
| Loading & Unloading Space<br>上落貨停車位                 | G/F<br>地下   | 1            | L1                         | 7.0 x 3.5                                      | 24.5   |

--- Boundary of the Development  
發展項目的界線