

10 FLOOR PLANS OF RESIDENTIAL PROPERTIES IN THE DEVELOPMENT

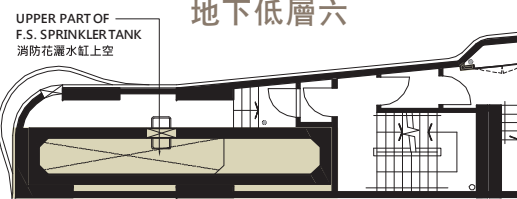
發展項目中的住宅物業的樓面平面圖

LOWER TIER HOUSE G FLOOR PLAN

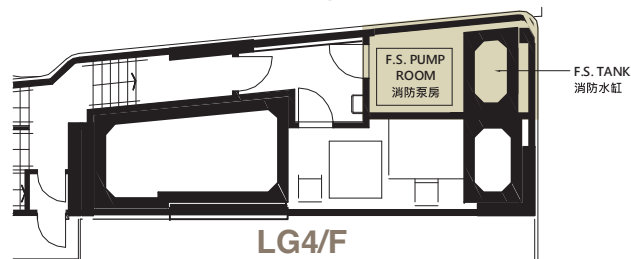
低階獨立屋G平面圖



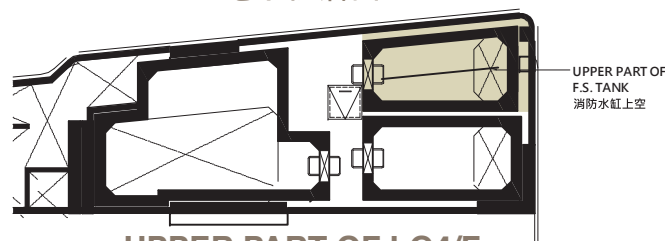
LG6/F
地下低層六



LG5/F
地下低層五



LG4/F
地下低層四



UPPER PART OF LG4/F
地下低層四上空

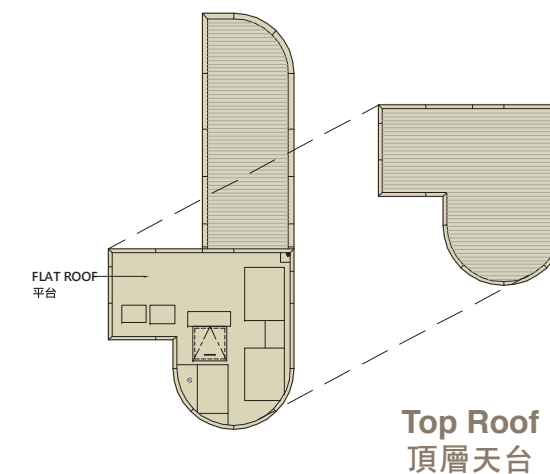
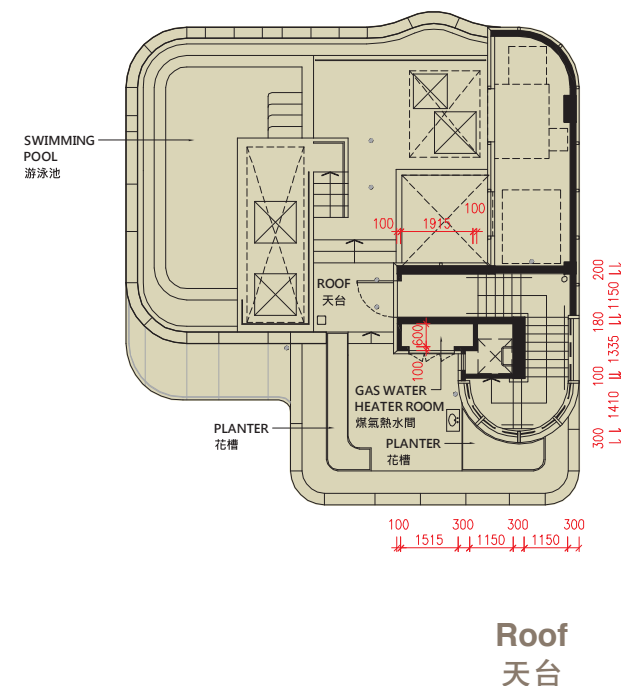
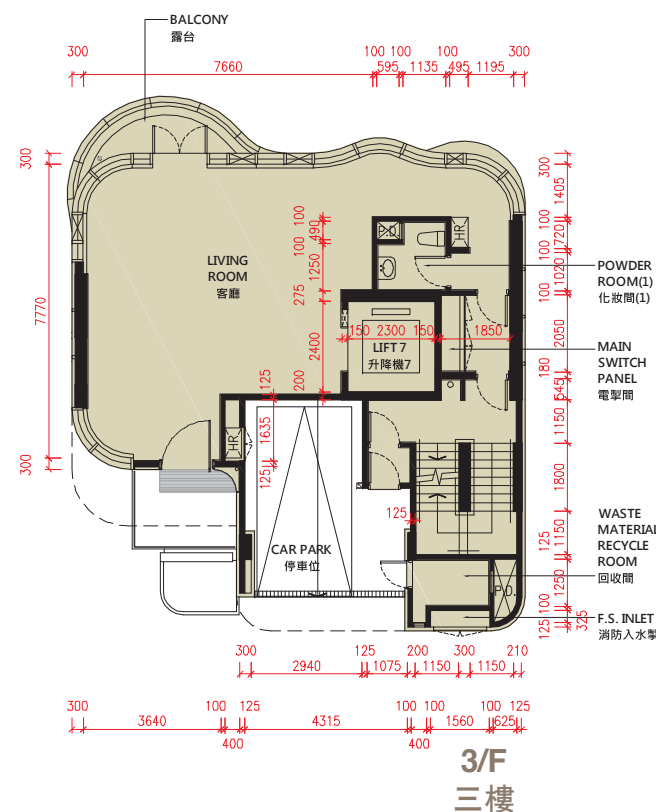
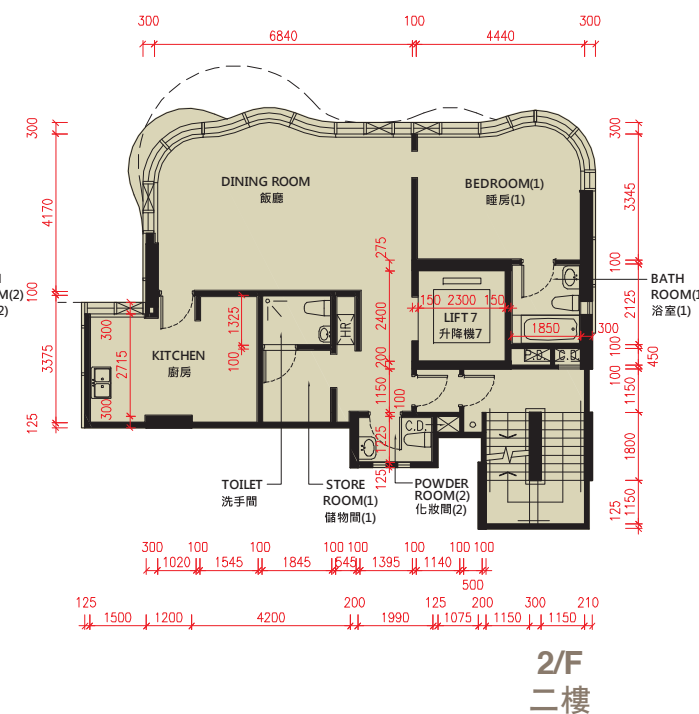
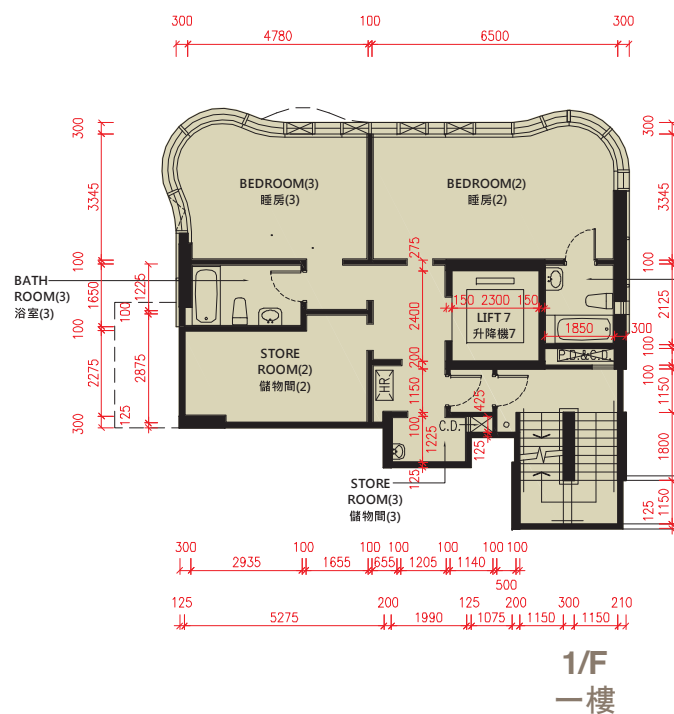
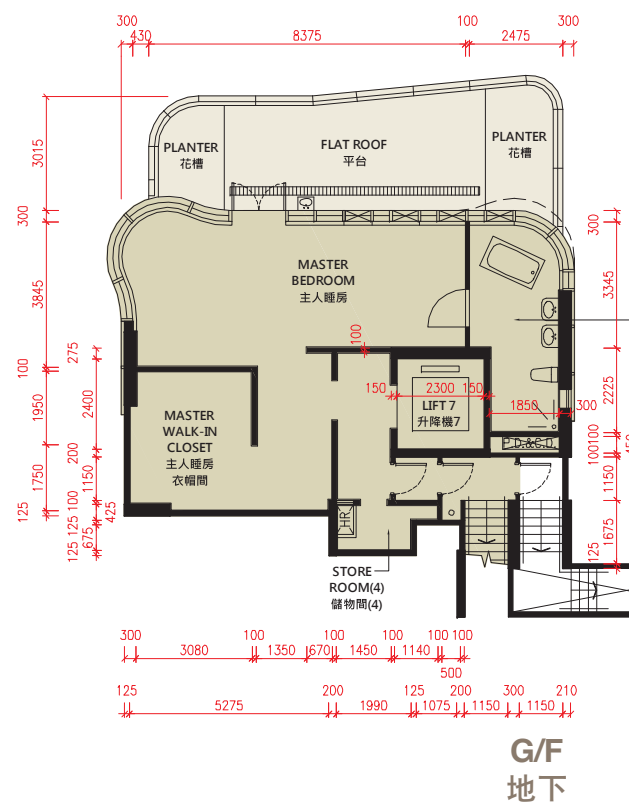
Thickness of floor slabs (excluding plaster) and floor to floor height
每層樓板之厚度及層與層高度 (不包括灰泥)

	Floor slab thickness 樓板厚度	Floor to Floor Height 層與層高度							
		House No. 屋號							
		A	B	C	D	E	F	G	H
4/F 四樓	175	3500	3500	3500	3500	3500	-	-	-
3/F 三樓	175	3500	3500	3500	3500	3500	3800	3800	3800
2/F 二樓	175	3500	3500	3500	3500	3500	3500	3500	3500
1/F 一樓	175	7100				7100			
VOID 中空		4100	4100	4100	4100	4100	3500	3500	3500
M/F 閣樓	175	-	2350	2325	2300	2100	-	-	-
G/F 地下	175	3755	2500	2525	2700	2750	3500	3500	3500

The dimensions in the floor plans are all structural dimensions in millimetre.
平面圖所列的數字是以毫米標示之建築結構尺寸。
The internal areas of the residential properties on the upper floors will generally be slightly larger than those on the lower floors because of the reducing thickness of the structural walls on the upper floors. (Not applicable)
因住宅物業的較高樓層的結構牆的厚度遞減，較高樓層的內部面積，一般比較低樓層的內部面積稍大。(不適用)

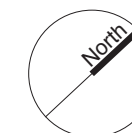
Remark:
Alterations works have been made to House G, Pulsa, please refer to the relevant "as-is" floor plans for such alterations.

備註：
淺水灣108的獨立屋G經過改動工程，有關改動請參閱相關之“現狀”平面圖。



- LEGEND 圖例:
- HR HOSE REEL 消防喉轆
 - P.D. PIPE DUCT 管道槽
 - C.D. CABLE DUCT 電線槽

Scale 比例
0 5 15metre/米

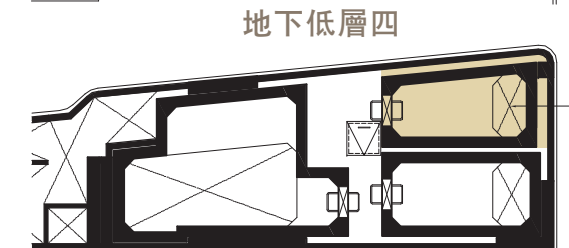
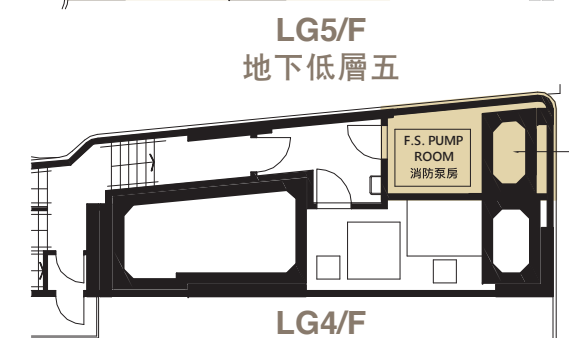
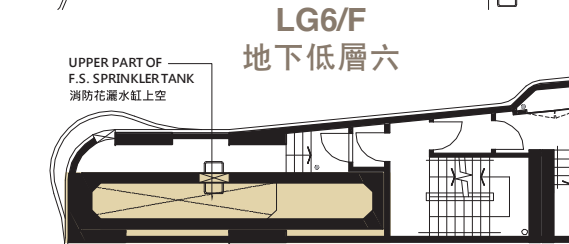


10 FLOOR PLANS OF RESIDENTIAL PROPERTIES IN THE DEVELOPMENT

發展項目中的住宅物業的樓面平面圖

LOWER TIER HOUSE G AS IS FLOOR PLAN

低階獨立屋G現狀平面圖



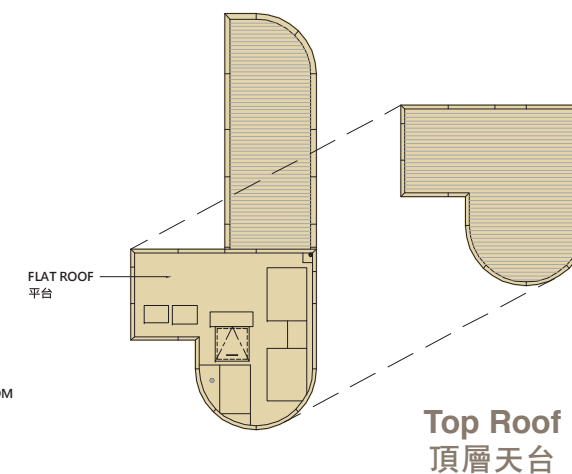
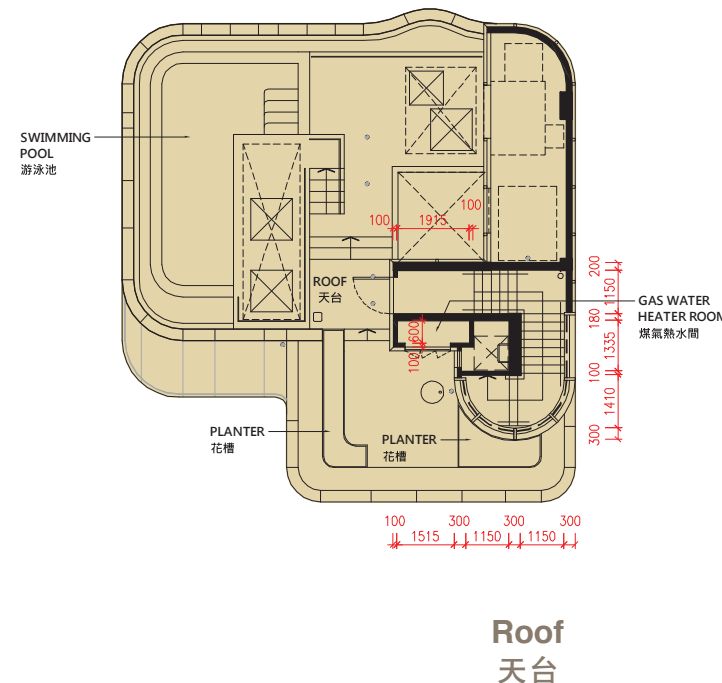
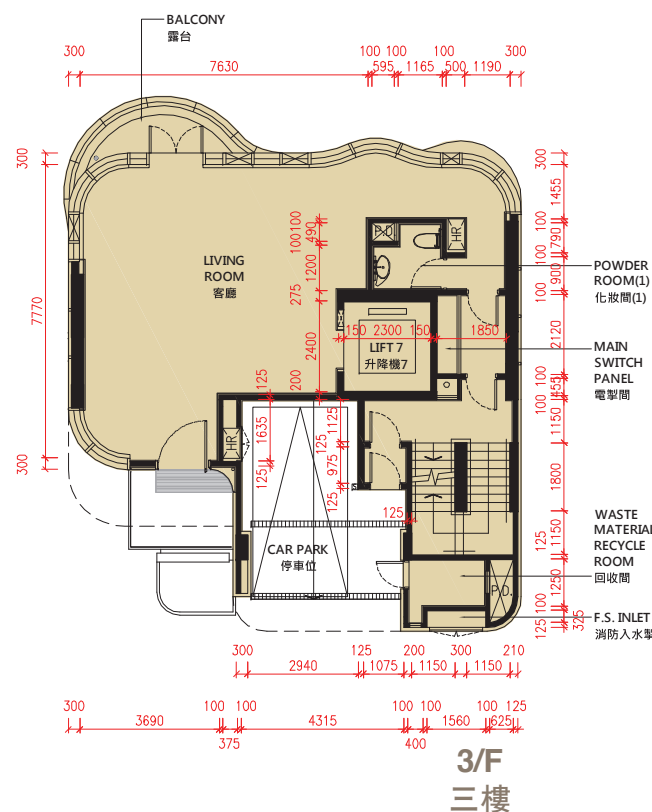
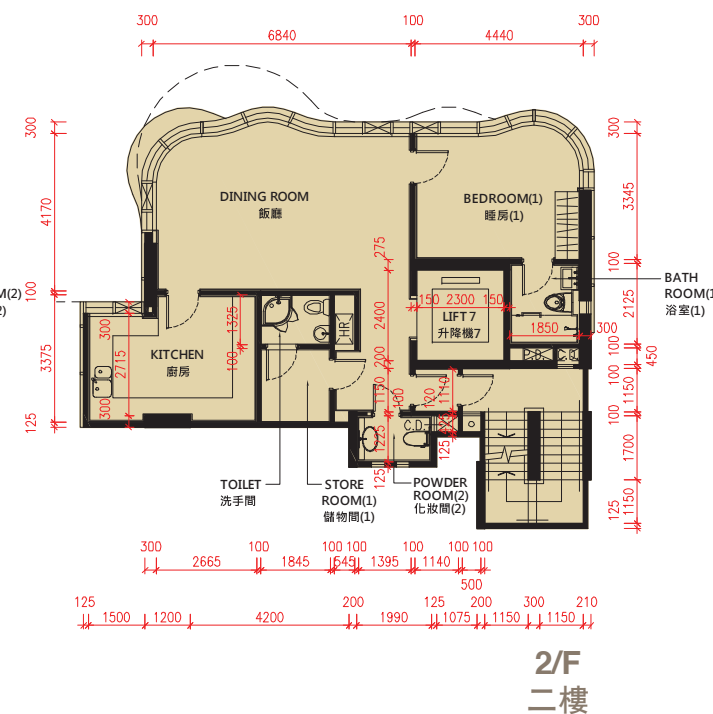
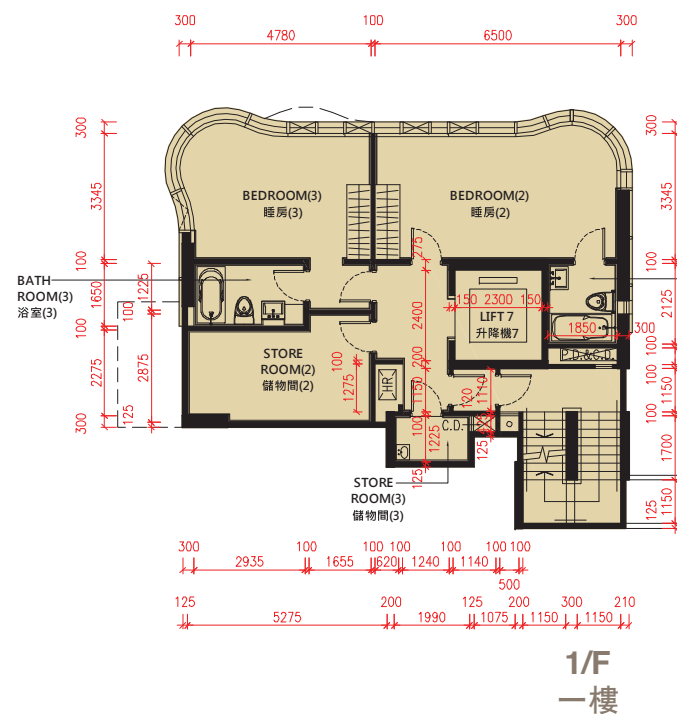
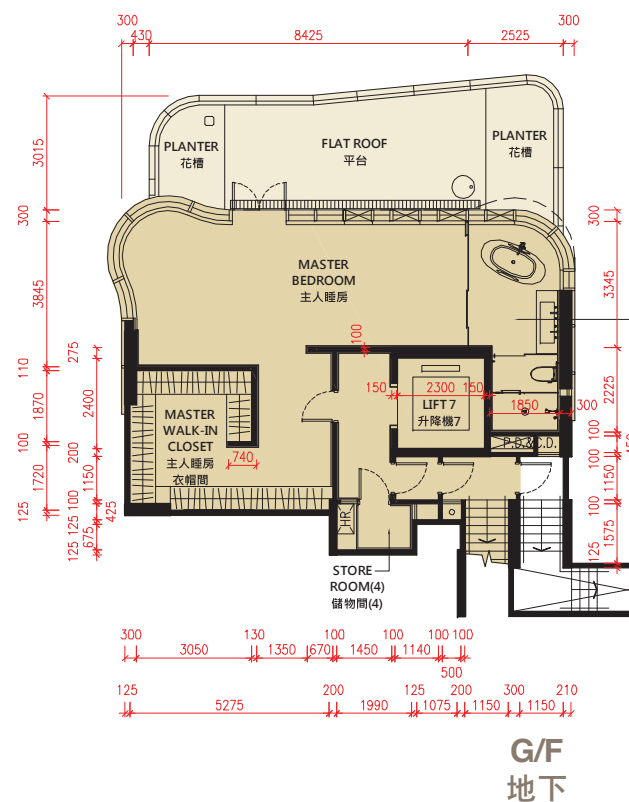
Thickness of floor slabs (excluding plaster) and floor to floor height
每層樓板之厚度及層與層高度 (不包括灰泥)

	Floor slab thickness 樓板厚度	Floor to Floor Height 層與層高度							
		House No. 屋號							
		A	B	C	D	E	F	G	H
4/F 四樓	175	3500	3500	3500	3500	3500	-	-	-
3/F 三樓	175	3500	3500	3500	3500	3500	3800	3800	3800
2/F 二樓	175	3500	3500	3500	3500	3500	3500	3500	3500
1/F 一樓	175	7100	4100	4100	4100	4100	3500	3500	3500
M/F 閣樓	175	-	2350	2325	2300	2100	-	-	-
G/F 地下	175	3755	2500	2525	2700	2750	3500	3500	3500

The dimensions in the floor plans are all structural dimensions in millimetre.
平面圖所列的數字是以毫米標示之建築結構尺寸。
The internal areas of the residential properties on the upper floors will generally be slightly larger than those on the lower floors because of the reducing thickness of the structural walls on the upper floors. (Not applicable)
因住宅物業的較高樓層的結構牆的厚度遞減，較高樓層的內部面積，一般比較低樓層的內部面積稍大。(不適用)

Remarks:

- This page shows as is floor plan due to alterations.
- The indications of fittings such as sinks, bathtubs, water closets and wash basins, etc shown on the floor plans are indications of their approximate locations only and not indications of their actual size, design or shapes.
- The internal ceiling height within residential properties may vary due to structural, architectural and/or decoration design variations.



備註:

- 本頁是更改後的現狀平面圖。
- 樓面平面圖所示之裝置如洗滌盆、浴缸、坐廁及洗手盆等只供展示其大約位置而非展示其實際大小、設計及形狀。
- 住宅物業之天花高度將會因應其結構、建築及或裝修設計上的差異而有所不同。

LEGEND 圖例:

- HR HOSE REEL 消防喉轆
- P.D. PIPE DUCT 管道槽
- C.D. CABLE DUCT 電線槽

Scale 比例

