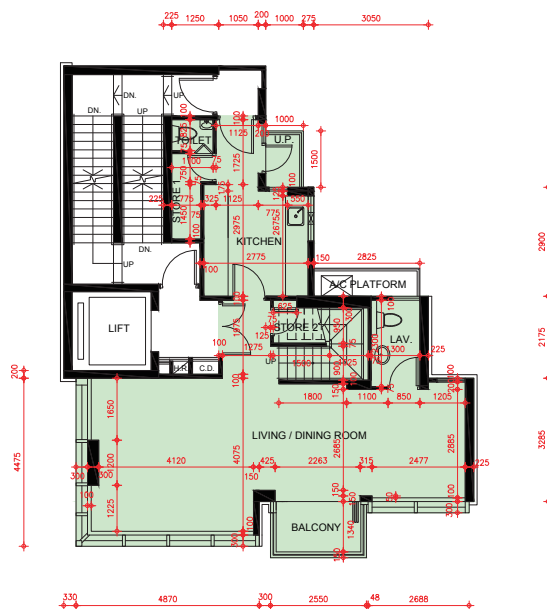


FLOOR PLANS OF RESIDENTIAL PROPERTIES IN THE DEVELOPMENT

發展項目的住宅物業的樓面平面圖

20/F Floor Plan
(LOW ZONE TRIPLEX FLOOR PLAN)
20樓平面圖
(三層式低層平面圖)



SCALE 比例尺: 0M(米) 5M(米) 10M(米)

1. The floor-to-floor height of each residential property on 20/F : 2850mm, 3000mm and 3150mm.
2. The thickness of the floor slabs (excluding plaster) of each residential property on 20/F : 125mm and 150mm.
3. The internal areas of the residential properties on the upper floors will generally be slightly larger than those on the lower floors because of reducing thickness of the structural walls on the upper floors.

Notes:

- The dimensions of floor plans are all structural dimensions in millimetre.
- Please refer to Page 19 of this sales brochure for remarks, legend of the terms and abbreviations shown in this floor plan.

1. 20樓每個住宅物業的層與層之間的高度 : 2850毫米、3000毫米及3150毫米。
2. 20樓每個住宅物業的樓板 (不包括灰泥) 的厚度 : 125毫米及150毫米。
3. 因住宅物業的較高樓層的結構牆的厚度遞減, 較高樓層的內部面積, 一般比較低樓層的內部面積稍大。

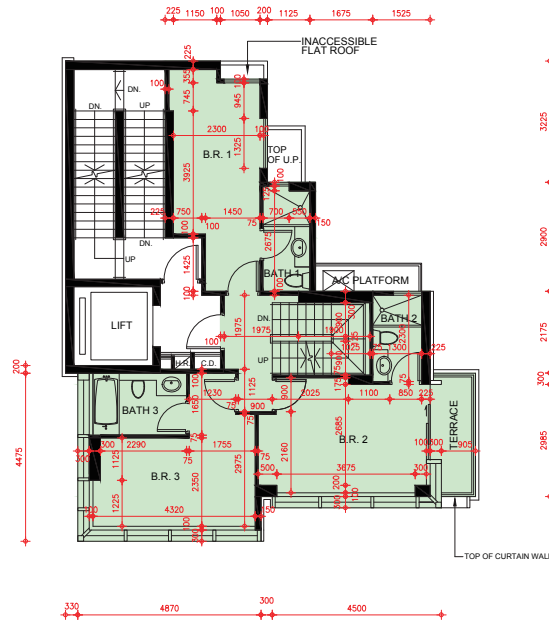
註:

- 樓面平面圖之尺規所列數字以結構尺規毫米標示。
- 樓面平面圖中顯示之附註, 名詞及簡稱請參閱本售樓說明書第 19頁。

FLOOR PLANS OF RESIDENTIAL PROPERTIES IN THE DEVELOPMENT

發展項目的住宅物業的樓面平面圖

21/F Floor Plan
(MID ZONE TRIPLEX FLOOR PLAN)
21樓平面圖
(三層式中層平面圖)



SCALE 比例尺: 0M(米) 5M(米) 10M(米)

1. The floor-to-floor height of each residential property on 21/F : 2850mm and 3150mm.
2. The thickness of the floor slabs (excluding plaster) of each residential property on 21/F : 125mm and 150mm.
3. The internal areas of the residential properties on the upper floors will generally be slightly larger than those on the lower floors because of reducing thickness of the structural walls on the upper floors.

Notes:

- The dimensions of floor plans are all structural dimensions in millimetre.
- Please refer to Page 19 of this sales brochure for remarks, legend of the terms and abbreviations shown in this floor plan.

1. 21樓每個住宅物業的層與層之間的高度 : 2850毫米及3150毫米。
2. 21樓每個住宅物業的樓板(不包括灰泥)的厚度 : 125毫米及150毫米。
3. 因住宅物業的較高樓層的結構牆的厚度遞減, 較高樓層的內部面積, 一般比較低樓層的內部面積稍大。

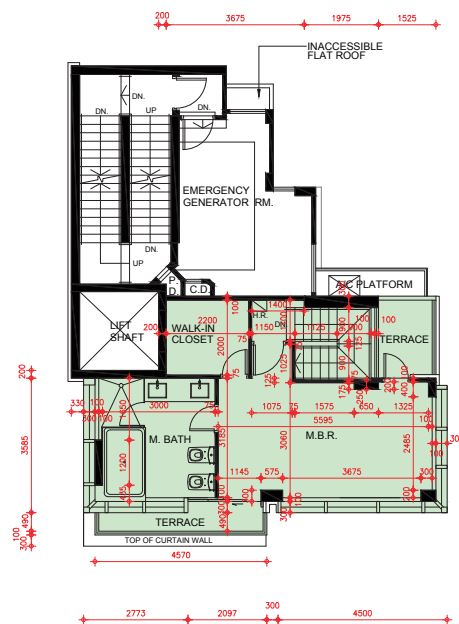
註:

- 樓面平面圖之尺規所列數字以結構尺規毫米標示。
- 樓面平面圖中顯示之附註, 名詞及簡稱請參閱本售樓說明書第 19 頁。

FLOOR PLANS OF RESIDENTIAL PROPERTIES IN THE DEVELOPMENT

發展項目的住宅物業的樓面平面圖

22/F Floor Plan
(HIGH ZONE TRIPLEX FLOOR PLAN)
22樓平面圖
(三層式高層平面圖)



SCALE 比例尺: 0M(米) 5M(米) 10M(米)

1. The floor-to-floor height of each residential property on 22/F : 2900mm.
2. The thickness of the floor slabs (excluding plaster) of each residential property on 22/F : 150mm and 250mm.
3. The internal areas of the residential properties on the upper floors will generally be slightly larger than those on the lower floors because of reducing thickness of the structural walls on the upper floors.

Notes:

- The dimensions of floor plans are all structural dimensions in millimetre.
- Please refer to Page 19 of this sales brochure for remarks, legend of the terms and abbreviations shown in this floor plan.

1. 22樓每個住宅物業的層與層之間的高度 : 2900毫米。
2. 22樓每個住宅物業的樓板 (不包括灰泥) 的厚度 : 150毫米及250毫米。
3. 因住宅物業的較高樓層的結構牆的厚度遞減, 較高樓層的內部面積, 一般比較低樓層的內部面積稍大。

註:

- 樓面平面圖之尺規所列數字以結構尺規毫米標示。
- 樓面平面圖中顯示之附註, 名詞及簡稱請參閱本售樓說明書第 19頁。