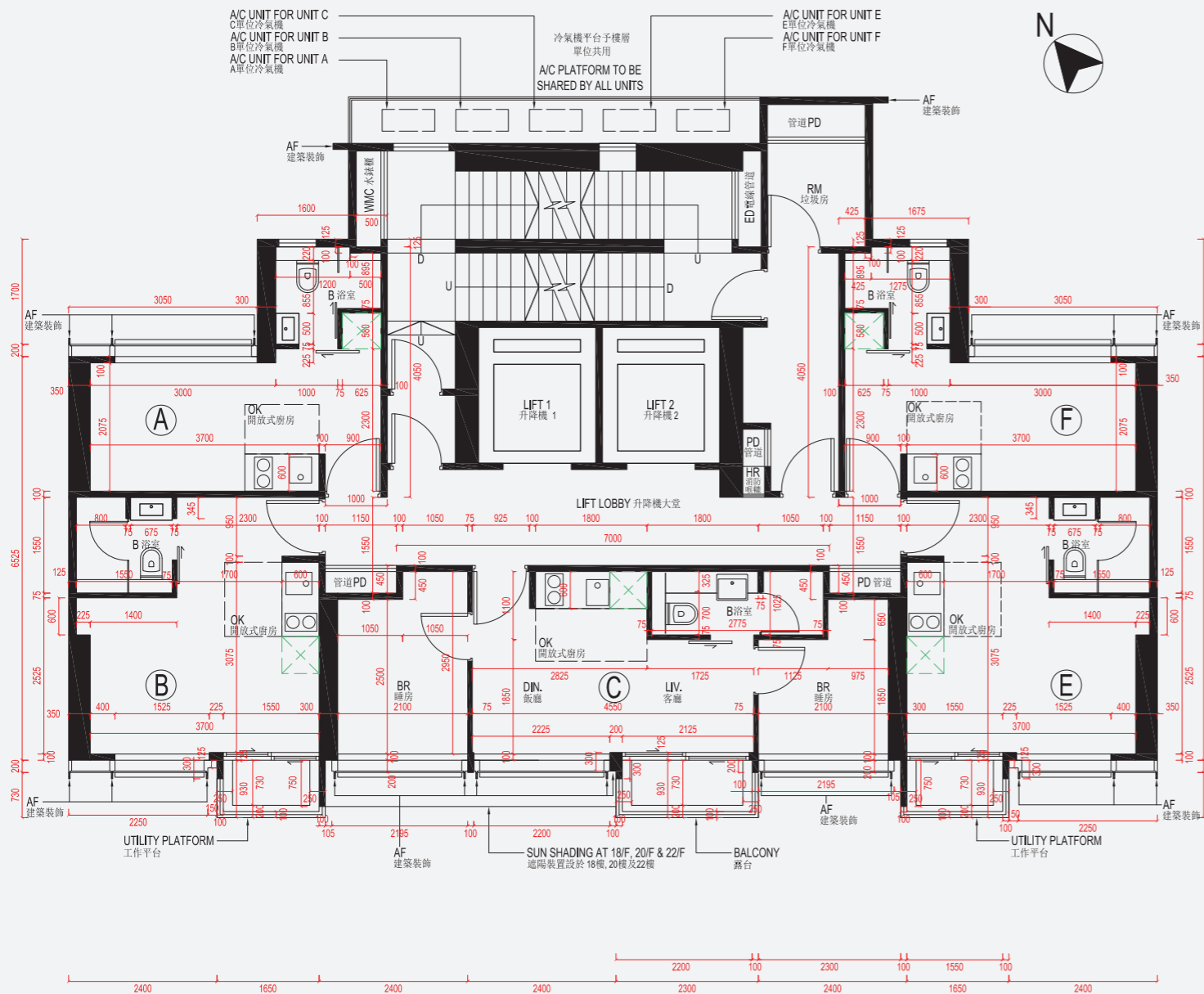


18樓、20樓及22樓
18/F, 20/F & 22/F



		單位 Unit				
		A	B	C	E	F
每個住宅物業的樓板 (不包括灰泥) 的厚度 (毫米)	The thickness of the floor slabs (excluding plaster) of each residential property (mm)	150	150, 190	150, 175	150, 190	150
每個住宅物業的層與層之間的高度 (指該樓層之石屎地台面與上一層石屎地台面之高度距離) (米)	The floor-to-floor height (refers to the height between the top surface of the structural slab of a floor and the top surface of the structural slab of its immediate upper floor) of each residential property (m)	3.15 *3.15	3.15 *3.15	3.15 *3.15	3.15 *3.15	3.15 *3.15

每個住宅物業的樓板 (不包括灰泥) 的厚度 (毫米)
The thickness of the floor slabs (excluding plaster) of each residential property (mm)

每個住宅物業的層與層之間的高度 (指該樓層之石屎地台面與上一層石屎地台面之高度距離) (米)
The floor-to-floor height (refers to the height between the top surface of the structural slab of a floor and the top surface of the structural slab of its immediate upper floor) of each residential property (m)

* 包括本樓層機電區域之跌級深度 (350毫米)。

1. 因住宅物業的較高樓層的結構牆的厚度遞減，較高樓層的內部面積，一般比較低樓層的內部面積稍大。(不適用)
- * Inclusive of the sunken depth of the electrical and mechanical zone on the floor of this floor (350mm).
1. The internal areas of the residential properties on the upper floors will generally be slightly larger than those on the lower floors because of the reducing thickness of the structural walls on the upper floors. (Not applicable)

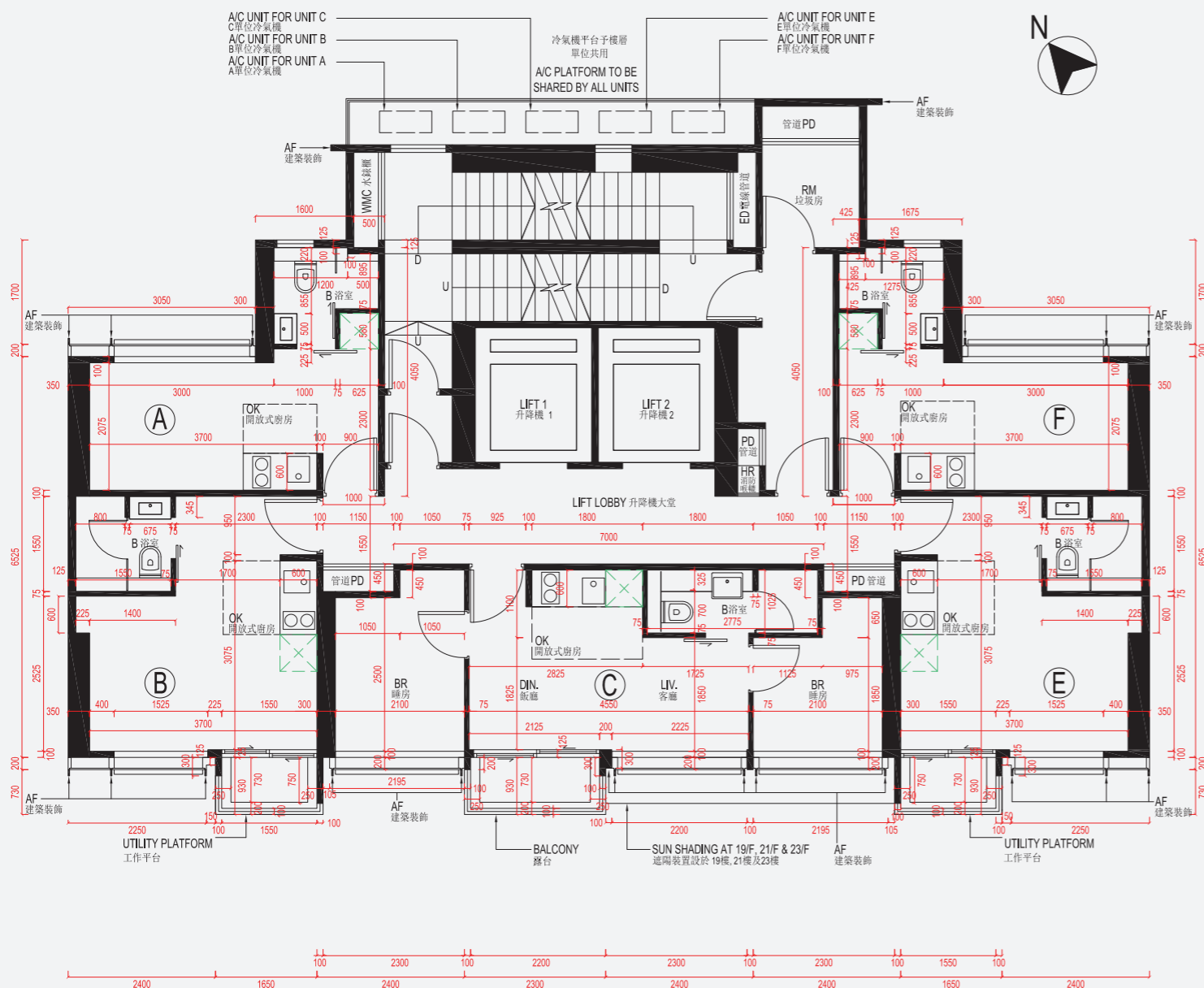


備註：1.樓面平面圖之尺規所列數字為以毫米標示之建築結構尺寸。
2.樓面平面圖中顯示之名詞、簡稱及其適用的附註，請參閱本售樓說明書第18頁。
Note: 1.The dimensions of the floor plans are all structural dimensions in millimeter.
2.Please refer to page 18 of this sales brochure for legend of the terms and abbreviations shown on the floor plan and the explanatory notes that are applicable thereto.

發展項目的住宅物業的平面圖

Floor plans of residential properties in the development

19樓、21樓及23樓
19/F, 21/F & 23/F



樓層 Floor	單位 Unit				
	A	B	C	E	F
19樓及21樓 19/F & 21/F	150	150, 190	150, 175	150, 190	150
23樓 23/F	150, 175	150, 200	150, 175	150, 200	150, 175
19樓及21樓 19/F & 21/F	3.15	3.15	3.15	3.15	3.15
23樓 23/F	2.925	2.80	2.80	2.80	2.925
	*3.15	*3.15	*3.15	*3.15	*3.15
	*3.275	*3.15	*3.15	*3.15	*3.275

每個住宅物業的樓板 (不包括灰泥) 的厚度 (毫米)
The thickness of the floor slabs (excluding plaster) of each residential property (mm)

每個住宅物業的層與層之間的高度 (指該樓層之石屎地台面與上一層石屎地台面之高度距離) (米)
The floor-to-floor height (refers to the height between the top surface of the structural slab of a floor and the top surface of the structural slab of its immediate upper floor) of each residential property (m)

- * 包括本樓層機電區域之跌級深度 (350毫米)。
- 1. 因住宅物業的較高樓層的結構牆的厚度遞減，較高樓層的內部面積，一般比較低樓層的內部面積稍大。(不適用)
- * Inclusive of the sunken depth of the electrical and mechanical zone on the floor of this floor (350mm).
- 1. The internal areas of the residential properties on the upper floors will generally be slightly larger than those on the lower floors because of the reducing thickness of the structural walls on the upper floors. (Not applicable)

備註：1.樓面平面圖之尺規所列數字為以毫米標示之建築結構尺寸。
2.樓面平面圖中顯示之名詞、簡稱及其適用的附註，請參閱本售樓說明書第18頁。
Note: 1.The dimensions of the floor plans are all structural dimensions in millimeter.
2.Please refer to page 18 of this sales brochure for legend of the terms and abbreviations shown on the floor plan and the explanatory notes that are applicable thereto.