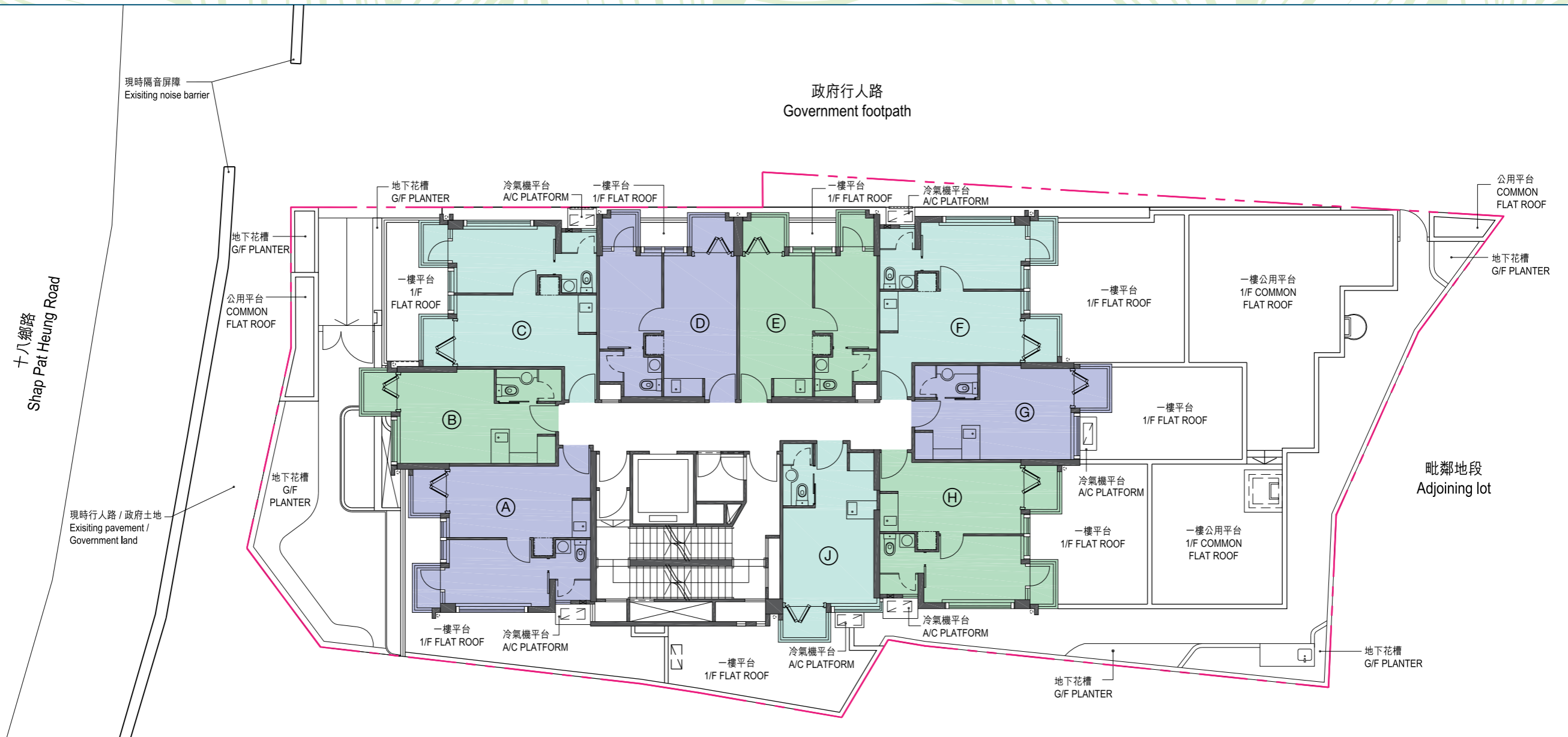



# 9. 發展項目的布局圖 LAYOUT PLAN OF THE DEVELOPMENT



 發展項目的界線  
BOUNDARY OF THE DEVELOPMENT

比例尺 SCALE:  0米(M) 5米(M) 

由發展項目的認可人士提供的該等建築物及設施的預計落成日期為2019年2月28日。

The estimated date of completion of these buildings and facilities, as provided by the authorized person for the development is 28th February 2019.

備註：圖中所示之發展項目住宅物業布局是參照適用於2樓至3樓及5樓至8樓的住宅物業的樓面平面圖。

Note: The layout of the residential properties in the development shown in this plan is based on the floor plan of residential properties in the development applicable to 2/F - 3/F & 5/F - 8/F.